



1.30

# 30SD10-33 TYPE

## Solenoid Directional Valve

Rated pressure (bar / psi)	207 / 3000
Peak flow (L/min / gpm)	18.9 / 5

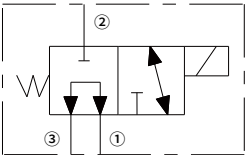
### Features

- Continuous-duty rated coil
- Efficient wet-armature construction
- Cartridges are voltage interchangeable
- Optional waterproof E-Coils rated up to IP69K
- All ports may be fully pressurized
- Industry common cavity
- Hardened parts for long life and low leakage

### Contents

Description	02
Operation	02
Ordering code	02
Materials	02
Technical data	03
Performance	03
Dimensions	04

### Symbol



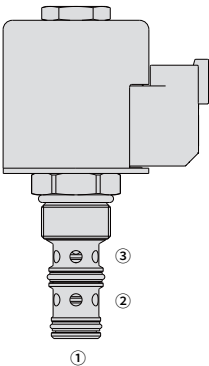
## Description

A solenoid-operated, 3-way, direct-acting, spool-type, screw-in hydraulic cartridge valve.

## Operation

When de-energized, 30SD10-33 allows flow from ③ to ① , while blocking flow at ② .

When energized, the valve shifts to open from ② to ① , while blocking at ③ .



## Ordering Code

30SD10-33		-	-	-	-	-	-	-
<b>Option:</b>		Blank		Voltage		Termination (VDC)		
None				Std. Coil:		E-Coil:		
				Less Coil		Amp Junior Timer		
				10VDC		(IP67 Rated)		
				12VDC		Deutsch DT04-2P		
				20VDC		(IP69K Rated)		
				24VDC		DIN 43650		
				28VDC		(IP65 Rated)		
<b>Porting:</b>		0				Termination (VDC)		
Cartridge only						D-Coil:		
						Dual Spades		
<b>Seals:</b>		P				(SAE J858a, IP65K Rated)		
Polyurethane (Std.)		N						
Buna N		V						
Fluorocarbon								

## Materials

### Cartridge:

Weight: 0.2 kg; Steel with hardened work surfaces. Zinc-plated exposed surfaces; Polyurethane (Std. ) seal.

### Standard Ported Body:

Anodized high-strength aluminum alloy, rated to 240 bar; Ductile iron and steel bodies available; Dimensions may differ, consult factory.

**Standard Coil:** Consult factory.

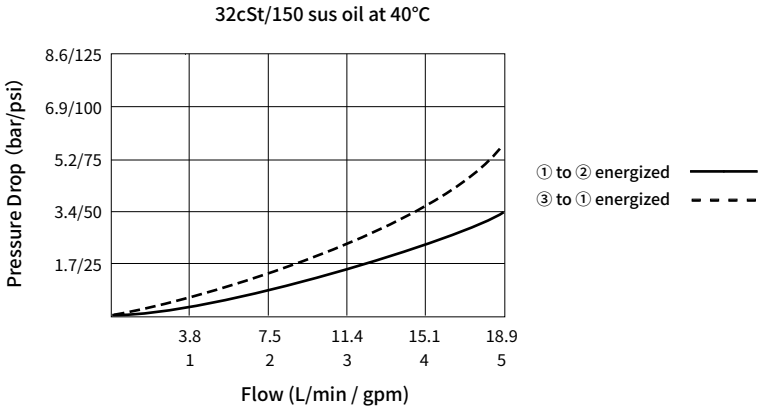
### E-Coil:

Weight: 0.41 kg; Perfect wound, fully encapsulated with rugged external metal shell; Rated up to IP69K with Deutsch sockets.

# Technical Data

Rated pressure		207 bar (3000 psi)
Peak flow		18.9 L/min (5 gpm)
Internal leakage		≤ 82 mL/min @ 207 bar
Coil duty rating		Continuous from 85% to 115% of nominal voltage
Initial coil current draw at 20°C	E-Coil	1.7 A at 12VDC; 0.85 A at 24VDC
	D-Coil	1.67 A at 12VDC; 0.83 A at 24VDC
Minimum pull-in voltage		85% of nominal at 207 bar
Cavity		VC10-3 (See technical reference)
Fluid		Mineral-based or synthetics with lubricating properties
Viscosity range		7.4 to 420 mm <sup>2</sup> /s
Temperature range	-54 to 107 °C (Polyurethane seals)	
	-40 to 100 °C (Buna N seals)	
	-26 to 204 °C (Fluorocarbon seals)	
Degree of fluid contamination		The minimum pollution level is ISO4406 level 20/18/14, and level 17/15/13 is recommended to prolong the service life

## Performance (Cartridge Only)



Dimensions

