



1.12

Check valve pilot operated

Type Z2S 16...L5X

Size 16
Up to 315 bar
Up to 300 L/min



Contents

Function and configuration	02
Symbols	02
Ordering code	03
Technical data	03
Characteristic curves	03
Unit dimensions	04

Features

- Porting pattern to DIN 24 340
- Leakage-free closure for one or two ports
- Sandwich plate valve,
for use in vertical stacking assemblies
- 4 cracking pressures, optional

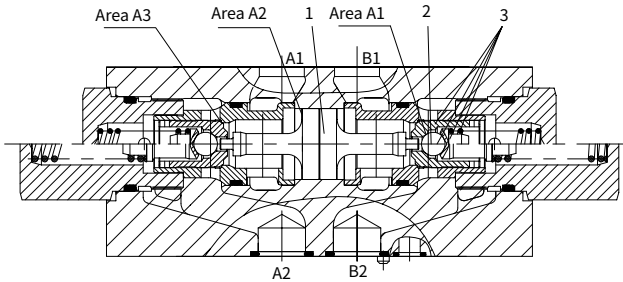
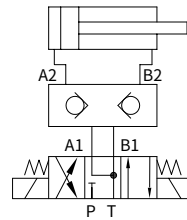
Function and configuration

Hydraulic pilot operated check valves type Z2S16 are sandwich plate design. They are used for the leakage-free closure of one or two service ports, even for long periods of time. Free flow occurs from A1 to A2 or B1 to B2. Flow in the opposite direction is blocked.

When fluid flows from A1 to A2, the spool (1) is pressurised and is pushed to the right, thereby opening the ball poppet valve (2) which then opens the check valve (3).

In order to make reliable closure of the two check valves in the neutral position, the service ports A1 and B1 of the directional valve must be connected to returning line.

Circuit example

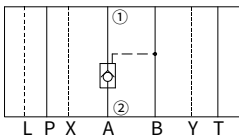


Z2S16..L5X/...check valve, hydraulic pilot operated

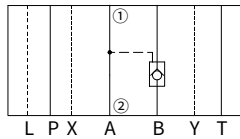
- 1 Spool
- 2 Ball poppet valve
- 3 Check valve

Symbols (① =valve side, ② = sub-plate side)

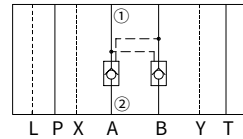
Z2S16A..L5X/...



Z2S16B..L5X/...



Z2S16..L5X/...



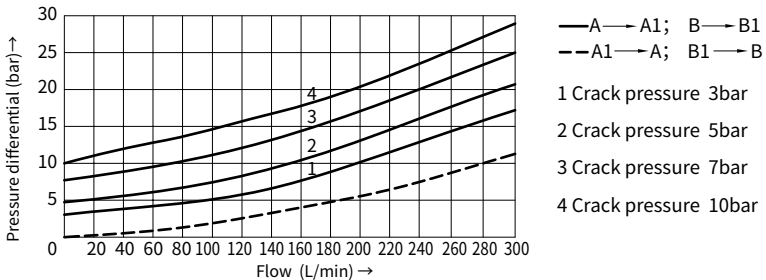
Ordering code

	Z2S	16		-	L5X	/	*
Check valve, hydraulic pilot operated	Further details in clear text						
Size 16	=16						
Leak-free closure in channels A and B	= -						
Leak-free closure in channel A	= A						
Leak-free closure in channel B	= B						
	No code = NBR seals V = FKM seals						
	L5X= Series L50 to L59 (L50 to L59: unchanged installation and connection dimensions)						
	1 = Crack pressure 3bar 2 = Crack pressure 5bar 3 = Crack pressure 7.5bar 4 = Crack pressure 10bar						

Technical data

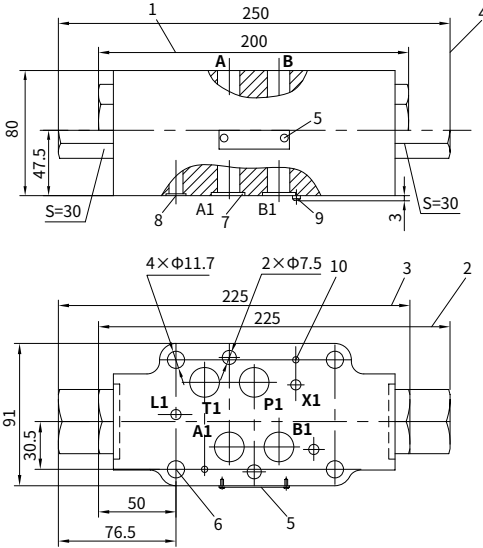
Fluid	Mineral oil suitable for NBR and FKM seal	
	Phosphate ester for FKM seal	
Degree of contamination	Maximum permissible degree of fluid contamination: Class 9. NAS 1638 or 20/18/15, ISO4406	
Fluid temperature range	°C	-30 to +80 (NBR seal) -20 to +80 (FKM seal)
Viscosity range	mm ² /s	2.8 to 500
Operating pressure	bar	315
Max.flow-rate	L/min	300
Flow direction	See symbols	
Crack pressure(free flow direction)	bar	3, 5, 7.5, 10
Area ratio	A1/A2=1/11.8 A3/A2=1/2.8 (Please refer to page "02/04" for section drawing)	
Weight	kg	6.8

Characteristic curves (Measured at $\vartheta_{oil}=40^{\circ}C \pm 5^{\circ}C$, using HLP46)

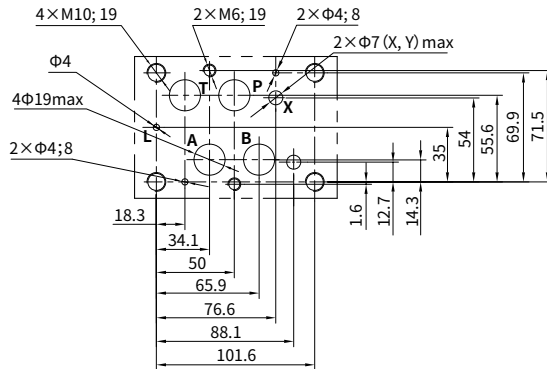
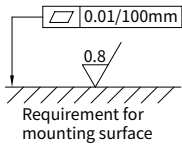


Unit dimensions

(Dimensions in mm)



- 1 Valve with version 1 or 2 cracking pressure, check valve in port A and/or port B
- 2 Valve with version 3 or 4 cracking pressure, check valve in port B.
- 3 Valve with version 3 or 4 cracking pressure, check valve in port A.
- 4 Valve with version 3 or 4 cracking pressure, check valve in port A and B
- 5 Name plate
- 6 Mounting holes
- 7 O-rings
22×2.5 for ports A, B, P, T
- 8 O-rings
10×2 for ports X, Y, L
- 9 Locating pin
- 10 Locating holes

**Valve mounting screws:**

Internal hexagon screw

4-M10 GB/T 70.1-2000

Tightening torque $M_A=75$ Nm

2-M6 GB/T 70.1-2000

Tightening torque $M_A=15.5$ Nm

must be ordered separately

**It must be ordered separately
if connection plate is needed.**

Type:

G172/01(G3/4), G172/02 (M27×2)

G174/01(G1), G174/02(M33×2)