

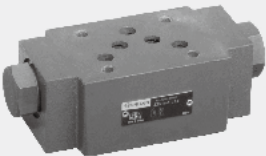


1.11

Check valve pilot operated

Type Z2S 10...L3X

Size 10
Up to 315bar
Up to 120 L/min



Contents

Function and configuration	02
Symbols	02
Ordering code	03
Technical data	03
Characteristic curves	03
Unit dimensions	04

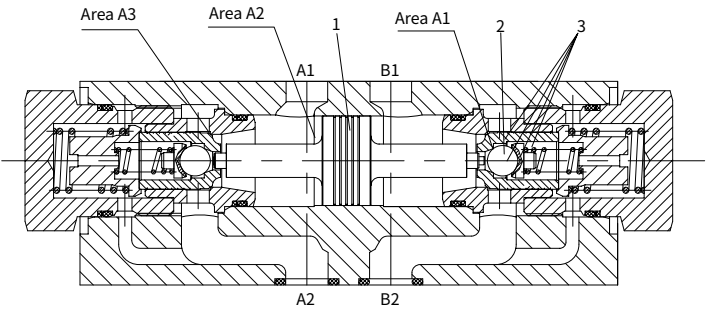
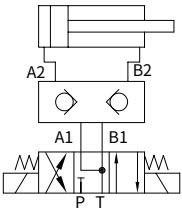
Features

- Porting pattern to DIN 24 340
- Leakage-free closure for one or two ports
- Sandwich plate valve, for use in vertical stacking assemblies
- 4 cracking pressures, optional

Function and configuration

Hydraulic pilot operated check valves type Z2S10 are sandwich plate design. They are used for the leakage-free closure of one or two ports, even for long periods of time. Fluid flows freely from A1 to A2 or B1 to B2. Flow in the opposite direction is blocked. When fluid flows from A1 to A2, the spool (1) is pressurised and is pushed to the right, thereby opening the ball poppet valve (2) which then opens the check valve (3). In order to make the reliable closure of the two check valves in the neutral position, the service ports A1 and B1 must be connected to tank.

Circuit example

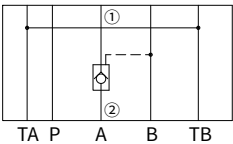


Z2S10..L3X/...check valve, hydraulic pilot operated

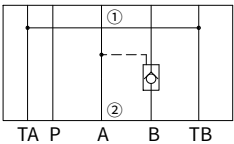
- 1 Spool 2 Ball poppet valve 3 Check valve

Symbols (① =valve side, ② = sub-plate side)

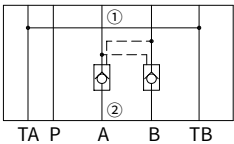
Z2S10A..L3X/...



Z2S10B..L3X/...



Z2S10..L3X/...



Ordering code

Z2S

10

L3X

*

Check valve, hydraulic pilot operated

Nominal size 10 =10

Leak-free closure in channels A and B = -
Leak-free closure in channel A = A
Leak-free closure in channel B = B

Further details in clear text

No code = NBR seals
V = FKM seals

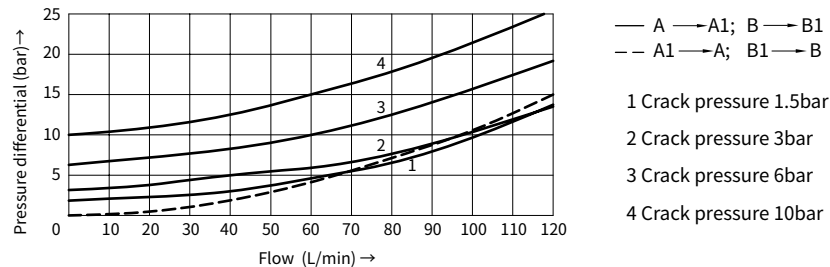
L3X= Series L30 to L39
(L30 to L39: unchanged installation and connection dimensions)

1 = Crack pressure 1.5bar
2 = Crack pressure 3bar
3 = Crack pressure 6bar
4 = Crack pressure 10bar

Technical data

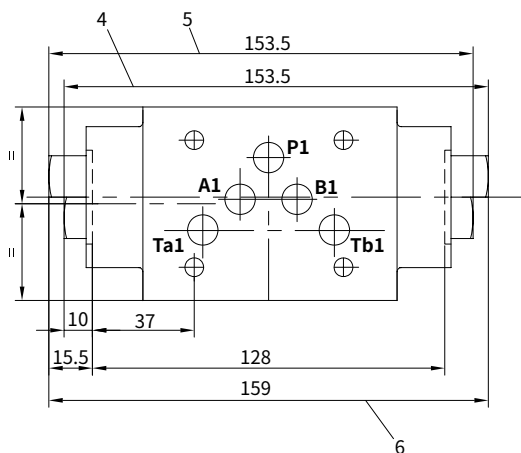
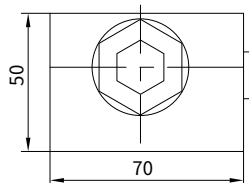
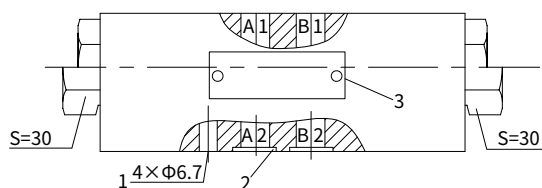
Fluid	Mineral oil suitable for NBR and FKM seal Phosphate ester for FKM seal	
Degree of contamination	Maximum permissible degree of fluid contamination: Class 9. NAS 1638 or 20/18/15, ISO4406	
Fluid temperature range	°C	-30 to +80 (NBR seal) -20 to +80 (FKM seal)
Viscosity range	mm ² /s	2.8 to 500
Operating pressure	bar	315
Max.flow-rate	L/min	120
Flow direction	See symbol	
Crack pressure(free flow direction)	bar	1.5, 3, 6, 10
Area ratio	A1/A2=1/13.4 A3/A2=1/2.68 (Please refer to page "02/04" for section drawing)	
Weight	kg	3

Characteristic curves (Measured at $\vartheta_{oil}=40^{\circ}\text{C} \pm 5^{\circ}\text{C}$, using HLP46)



Unit dimensions

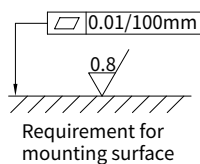
(Dimensions in mm)



- 1 4 through holes for valve mounting screws
- 2 O-rings 12×2 for ports A, B, P, T
- 3 Name plate
- 4 Check valve in port B
- 5 Check valve in port A
- 6 Check valve in both port A and B

Valve mounting screws:

Internal hexagon screw
 Size 10: 4-M6 GB/T 70.1-2000
 Tightening torque $M_A=15.5$ Nm
 must be ordered separately



It must be ordered separately, if connection is needed.

Type: G66/01(G3/8), G66/02 (M18×1.5)
 G67/01(G1/2), G67/02(M22×1.5)
 G534/01(G3/4), G534/02(M27×2)

