

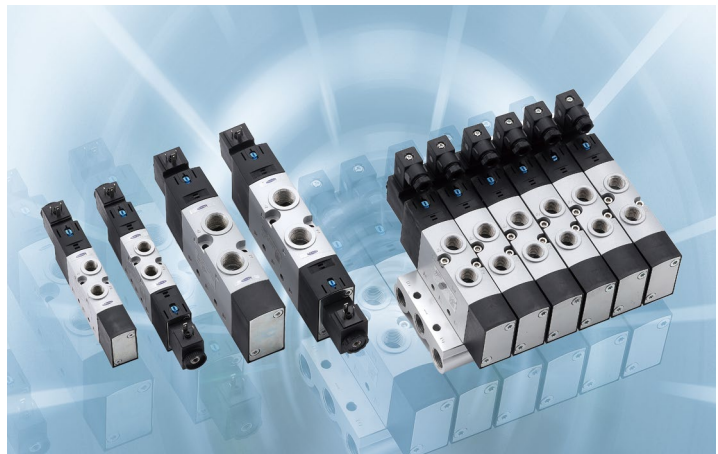
VMDB Series -- Solenoid Valve

Overview

VMDB series belongs to direction-change valve, with comprehensive valve functions.

Feature

- Piston spool with sealing cartridge. A reliable, robust valve with a long life
- Various valve functions, satisfying for any application needs
- Operating voltage can be easily altered by changing the solenoid coil
- Flow rate up to 2300 l/min.



Overview of product range

VMDB-L- designed to be used without common pneumatic links. All pneumatic connections are on the valve and can be equipped with fittings/tubing.

VMDB-L										
		Valve functions and flow [l/min]								
Size	Operating ports	23R	23U	25M	25B	35C	35P	35E		
20	G1/8	700	700	700	700	700	600	600		
25	G1/4	1000	1000	1300	1300	1200	1000	1000		
30	G3/8	2300	2300	2300	2300	2000	1600	1600		

Overview of valve functions

Valve	Code	Description	VMDB-L		
			Size		
			20	25	30
3/2-way, normally closed, pneumatic spring					
	23R-A	Internal pilot air supply, non-reversible	■	■	■
		External pilot air supply, reversible	■	■	■
3/2-way valve, normally closed, pneumatic/ mechanical spring					
	23R-M	<ul style="list-style-type: none"> • Internal pilot air supply, non-reversible • Mechanical spring, internally pneumatic spring 	■	-	-
		<ul style="list-style-type: none"> • External pilot air supply, reversible • Mechanical spring, internally pneumatic spring 	■	-	-
3/2-way valve, normally closed, mechanical spring					
	23R-M	Internal pilot air supply, non-reversible	-	■	■
		External pilot air supply, reversible	-	■	■

Overview of valve functions

Valve	Code	Description	VMDB-L		
			Size		
			20	25	30
3/2-way valve, normally open, pneumatic spring					
	23U-A	Internal pilot air supply, non-reversible	■	■	■
		External pilot air supply, reversible	■	■	■
3/2-way valve, normally open, pneumatic/ mechanical spring					
	23U-M	<ul style="list-style-type: none"> Internal pilot air supply, non-reversible Mechanical spring, internally pneumatic spring 	■	-	-
		<ul style="list-style-type: none"> External pilot air supply, reversible Mechanical spring, internally pneumatic spring 	■	-	-
3/2-way valve, normally open, pneumatic/ mechanical spring					
	23U-M	Internal pilot air supply, non-reversible	-	■	■
		External pilot air supply, reversible	-	■	■
5/2-way, single solenoid, pneumatic spring					
	25M-A	Internal pilot air supply, non-reversible	■	■	■
		External pilot air supply, reversible	■	■	■
5/2-way, single solenoid, mechanical spring					
	25M-M	<ul style="list-style-type: none"> Internal pilot air supply, non-reversible Mechanical spring, internally pneumatic spring 	■	■	■
		External pilot air supply, reversible	■	■	■
5/2-way, double solenoid					
	25B	Internal pilot air supply, non-reversible	■	■	■
		External pilot air supply, reversible	■	■	■

Actuator element

Control element

Service unit combination

Attachment

Overview of valve functions

Valve	Code	Description	VMDB-L		
			Size		
			20	25	30
5/3-way, mechanical spring, mid-position closed					
	35C	Internal pilot air supply, non-reversible	■	■	■
		External pilot air supply, reversible	■	■	■
5/3-way, mechanical spring, mid-position pressurised					
	35P	Internal pilot air supply, non-reversible	■	■	■
		External pilot air supply, reversible	■	■	■
5/3-way way, mechanical spring, mid-position exhausted					
	35E	Internal pilot air supply, non-reversible	■	■	■
		External pilot air supply, reversible	■	■	■

How to order

VMDB	-L	20	-23R	-A	Z	G18	5
Solenoid valve	①	②	③	④	⑤	⑥	⑦
①	- Type: L= in-line valve						
②	Size:20;25;30						
③	-Valve function	23R	3/2-way, normally closed	25M	5/2- way, single-solenoid/monodtsble	35C	5/3-way mid-position closed
		23U	3/2-way, normally open	25B	5/2-way, double-solenoid/bistable	35P	5/3-way mid-position pressurised
						35E	5/3-way mid-position exhausted
④	-Reset method	A	Pneumatic spring		M	Mechanical spring	
⑤	Pilot		Internal		Z	External	
⑥	Air supply connection	G18	G1/8(Specification 20 valve)		G14	G1/4(Specification 25 valve)	
					G38	G3/8(Specification 30 valve)	
⑨	Nominal operating voltage	5		DC24V(standard with indicators)			

Solenoid valve VMDB-L, size 20

General technical data								
Valve function	3/2-way		5/2-way		5/3-way			
Valve code	23R	23U	25M	25B	35C	35P	35E	
Valve width [mm]	21							
Nominal width [mm]	5.7				5	4.8	4.5	
Design	Piston spool							
Flow direction	With external pilot, reversible							
Pilot air supply	Internal or external							
Type of control	Piloted							
Manual override	Non-detenting							
Overlap	Positive overlap							
Sealing principle	Soft							
Type of mounting	Optionally via through-hole							
Standard nominal flow rate qnN [L/min]	700		700	700	700	600		
Actuation type	Electrical							
Mounting position	Any							
Exhaust function	Can be throttled							
Connection	1, 2, 3	G1/8	G1/8	G1/8	G1/8	G1/8	G1/8	G1/8
	4, 5	-	-	G1/8	G1/8	G1/8	G1/8	G1/8
Pilot air connection 12/14	M5							
Pilot exhaust air port 12/84	M5							

Data sheet - 5/2-way valve code		23R		23U	
Normal position		Normally closed		Normally open	
Stable position		Monostable		Monostable	
Reset method		Pneumatic spring		Mechanical spring	
Switching time [ms]	On	14	14	14	15
	Off	21	32	21	28
	Change	-	-	-	-

Data sheet - 5/2-way valve code		25M		25B	
Normal position		-		-	
Stable position		Monostable		Bistable	
Reset method		Pneumatic spring		Mechanical spring	
Switching time [ms]	On	20	12	-	
	Off	29	44	-	
	Change	-	-	10	

Data sheet - 5/3-way valve code		35C		35P		35E	
Normal position		Mid-position closed		Mid-position pressurised		Mid-position exhausted	
Stable position		Monostable					
Reset method		Mechanical spring					
Switching time [ms]	On	13	13	13			
	Off	42	42	44			
	Change	24	21	24			

Solenoid valve VMDB-L size 20

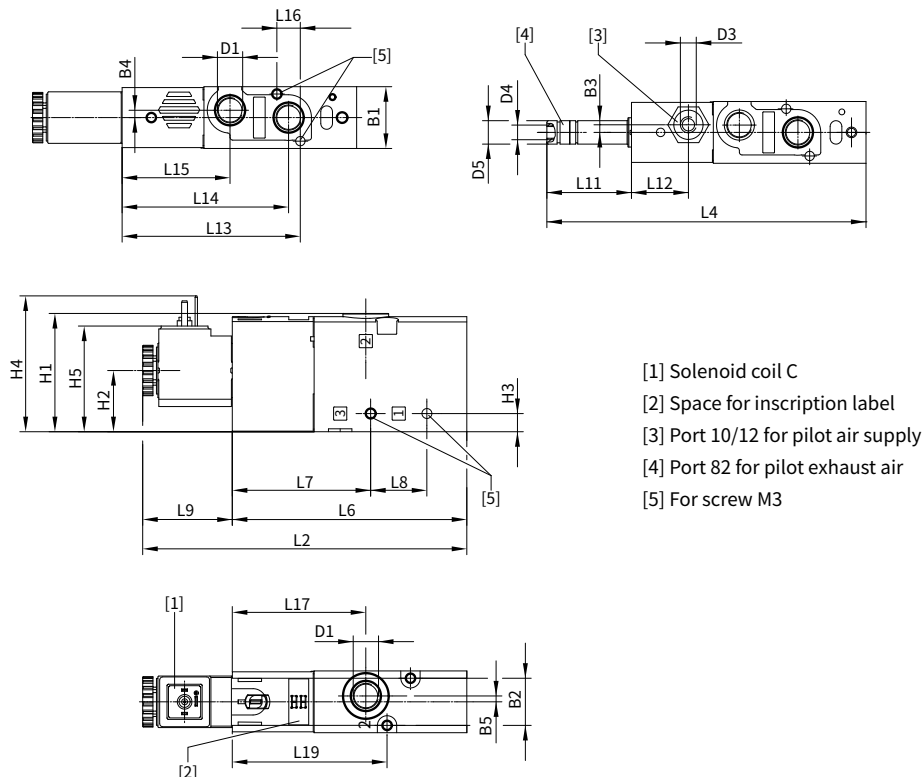
Safety characteristics	
Max. positive test pulse with logic 0 [is]	1900 (Valve, with coil)
Max. negative test pulse with logic 1 [is]	2700 (Valve, with coil)
Shock resistance	Shock test with severity level 2 to FN 942017-5 and EN 60068-2-27
Vibration resistance	Transport application test with severity level 2 to FN 942017-4 and EN 60068-2-6

Operating and environmental conditions				
Valve code	23R/U	25M	25B	35/C/P/E
Operating medium	Compressed air to ISO 8573-1:2010 [7:4:4]			
Operating pressure bar	Internal	2.5 ... 10	1.5 ... 10	2.5 ... 10
	External	-0.9 ... +10		
Pilot pressure bar	2.5 ... 10	1.5 ... 10	2.5 ... 10	
Ambient temperature °C	- 10 ... +60			
Temperature of medium °C	-10 ... +60			

Electrical data		
Electrical connection	Via accessory	
Operating voltage	[V DC]	12,24 ±10%
	[V AC]	110,220±10%
Power	[W]	2.6
Duty cycle	[%]	100
Degree of protection to EN 60529	IP65, with plug socket	

Information on materials	
Housing	Wrought aluminium alloy
Seals	HNBR, NBR
Piston spool	Wrought aluminium alloy
Screw	Galvanised steel

Dimensions - 3/2-way



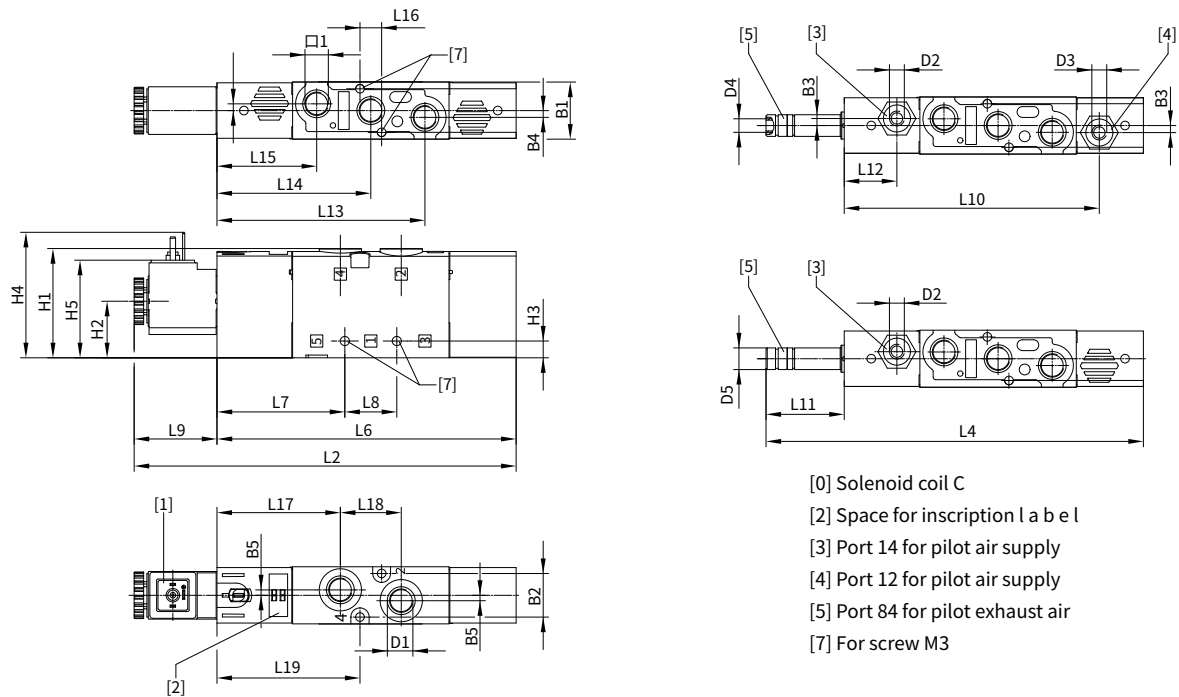
Solenoid valve VMDB-L, size 20

-Dimensions - 3/2-way

Type	B1	B2	B3	B4	B5	D1	D3	D4	D5φ	H1	H2	H3	H4	H5
VMDB-L20-23...-G18-...	21.1	16.1	-	2.5	2	G1/8	-	M5	8	40	20.9	6.2	46.7	36.4
VMDB-L20-23...-Z-G18-...			2.6				M5							

Type	L2	L4	L6	L7	L8	L9	L11	L12	L13	L14	L15	L16	L17	L19
VMDB-L20-23...-G18-...	110.7	109.1	80.1	47.3	19.2	30.6	29	-	60.9	56.9	36.9	8	45.6	52.9
VMDB-L20-23...-Z-G18-...								19.5						

Dimensions -5/2-way single-solenoid



Type	B1	B2	B3	B4	B5	D1	D2	D3	D4	D5 φ	H1	H2	H3	H4	H5
VMDB-L20-25M...-G18-...	21.1	16.1	-	2.5	2	G1/8	-	-	M5	8	40.4	20.9	6.2	46.7	36.4
VMDB-L20-25M...-Z-G18-...			2.6				M5	M5							

Type	L2	L4	L6	L7	L8	L9	L10	L11	L12	L13	L14	L15	L16	L17	L18	L19
VMDB-L20-25M...-G18-...	141.2	139.6	110.6	47.3	19.2	30.6	-	29	-	76.9	56.9	36.9	8	45.6	22.5	52.9
VMDB-L20-25M...-Z-G18-...							94.3		19.5							

Actuator element

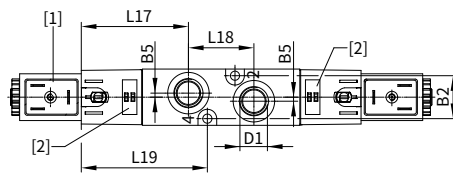
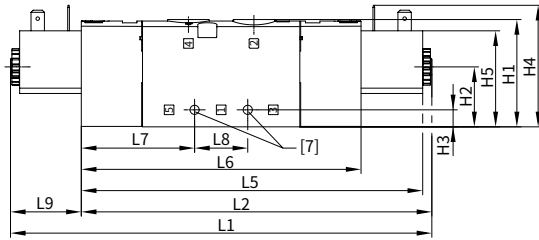
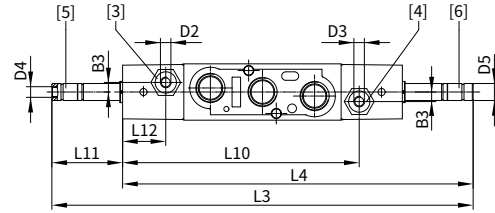
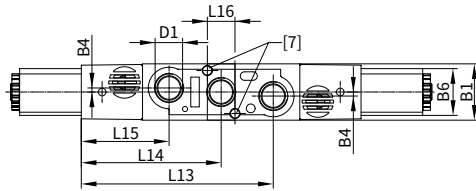
Control element

Service unit combination

Attachment

Solenoid valve VMDB-L, size 20

Dimensions - 5/3-way and 5/2-way double-solenoid valve



- [1] Solenoid coil C
- [2] Space for inscription label
- [3] Port 14 for pilot air supply
- [4] Port 12 for pilot air supply
- [5] Port 84 for pilot air supply
- [6] Port 82 for pilot air supply
- [7] For screw M3

Type	B1	B2	B3	B4	B5	D1	D2	D3	D4	D5φ	H1	H2	H3	H4	H5
VMDB-L20-35...-M-G18-...	21.1	16.1	-	2.5	2	G1/8	-	-	M5	8	40.4	20.9	6.2	46.7	36.4
VMDB-L20-35...-MZ-G18-...			2.6				M5	M5							
VMDB-L20-25B--G18-...			-				-	-							
VMDB-L20-25B-Z-G18-...			2.6				M5	M5							

Type	L1	L2	L3	L4	L5	L6	L7	L8	L9	L10	L11
VMDB-L20-35...-M-G18-...	174.9	144.3	171.7	142.7	139.1	113.7	47.3	19.2	30.6	-	29
VMDB-L20-35...-MZ-G18-...										94.3	
VMDB-L20-25B--G18-...										-	
VMDB-L20-25B-Z-G18-...										94.3	

Type	L12	L13	L14	L15	L16	L17	L18	L19
VMDB-L20-35...-M-G18-...	-	76.9	56.9	36.9	8	45.6	22.5	52.9
VMDB-L20-35...-MZ-G18-...	19.5							
VMDB-L20-25B--G18-...	-							
VMDB-L20-25B-Z-G18-...	19.5							

Solenoid valve VMDB-L, size 25

General technical data								
Valve function	3/2-way		5/2-way		5/3-way			
Valve code	23R	23U	25M	25B	35C	35P	35E	
Valve width [mm]	26.5							
Nominal width [mm]	6.3		6.9		6.5	6.3		
Design	Piston spool							
Flow direction	With external pilot, reversible							
Pilot air supply	Internal or external							
Type of control	Piloted							
Manual override	Non-detenting							
Overlap	Positive overlap							
Sealing principle	Soft							
Type of mounting	Optionally via through-hole							
Standard nominal flow rate q _{nN} [L/min]	1000		1300	1300	1200	1000		
Actuation type	Electrical							
Mounting position	Any							
Exhaust function	Can be throttled							
Connection	1, 2, 3	G1/4	G1/4	G1/4	G1/4	G1/4	G1/4	G1/4
	4, 5	-	-	G1/4	G1/4	G1/4	G1/4	G1/4
Pilot air connection 12/14	M5							
Pilot exhaust air port 12/84	M5							

Technical data - 3/2-way code		23R		23U	
Normal position		Normally closed		Normally open	
Stable position		Monostable		Monostable	
Reset method		Pneumatic spring		Mechanical spring	
Switching time [ms]	On	13	11	12	11
	Off	26	40	26	39
	Change	-	-	-	-

Technical data - 5/2-way code		25 M		25B	
Normal position		-		-	
Stable position		Monostable		Bistable	
Reset method		Pneumatic spring		Mechanical spring	
Switching time [ms]	On	19	12	-	
	Off	35	47	-	
	Change	-	-	11	

Technical data - 5/3-way code		35C		35P		35E	
Normal position		Mid-position closed		Mid-position pressurised		Mid-position exhausted	
Stable position		Monostable					
Reset method		Mechanical spring					
Switching time [ms]	On	13	14	14			
	Off	42	48	48			
	Change	26	25	25			

Solenoid valvr VMDB-L, size 25

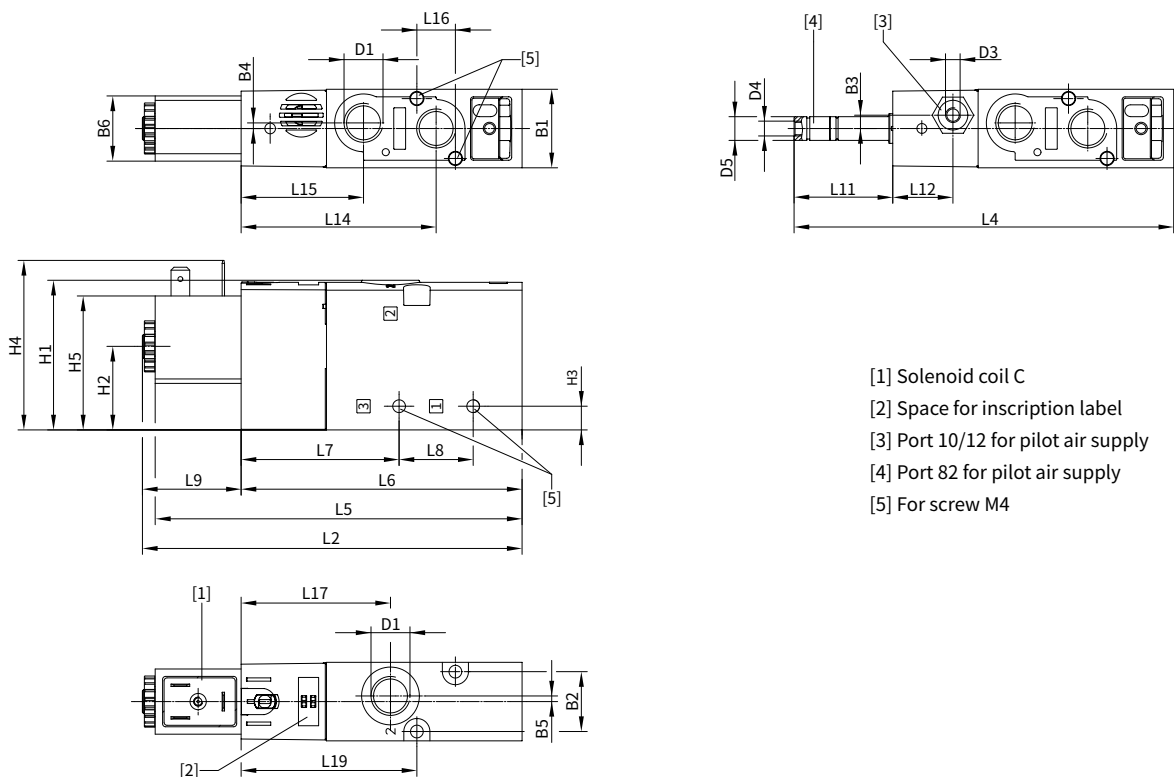
Safety characteristics	
Max. positive test pulse with logic 0[is]	2000 (valve with coil)
Max. negative test pulse with logic1[is]	3600 (valve with coil)
Shock resistance	Shock test with severity level 2 to FN 942017-5 and EN 60068-2-27
Vibration resistance	Transport application test with severity level 2 to FN 942017-4 and EN 60068-2-6

Operating and environmental conditions				
Valve code	23R/U	25M	25B	35/C/P/E
Operating medium	Compressed air to ISO 8573-1:2010 [7:4:4]			
Operating pressure bar	Internal	2.5 ... 10	1.5 ... 10	2.5 ... 10
	External	-0.9 ... +10		
Pilot pressure bar	2.5 ... 10	1.5 ... 10	2.5 ... 10	
Ambient temperature °C	- 10 ... +60			
Temperature of medium °C	-10 ... +60			

Electrical data		
Electrical connection	Via accessory	
Operating voltage	[V DC]	12,24 ±10%
	[V AC]	110,220±10%
Power	[W]	3.3
Duty cycle	[%]	100
Degree of protection to EN 60529	IP65, with plug socket	

Information on materials	
Housing	Die-cast aluminum
Seals	HNBR, NBR
Piston spool	Wrought aluminium alloy
Screw	Galvanised steel

Dimensions - 3/2-way valve



- [1] Solenoid coil C
- [2] Space for inscription label
- [3] Port 10/12 for pilot air supply
- [4] Port 82 for pilot air supply
- [5] For screw M4

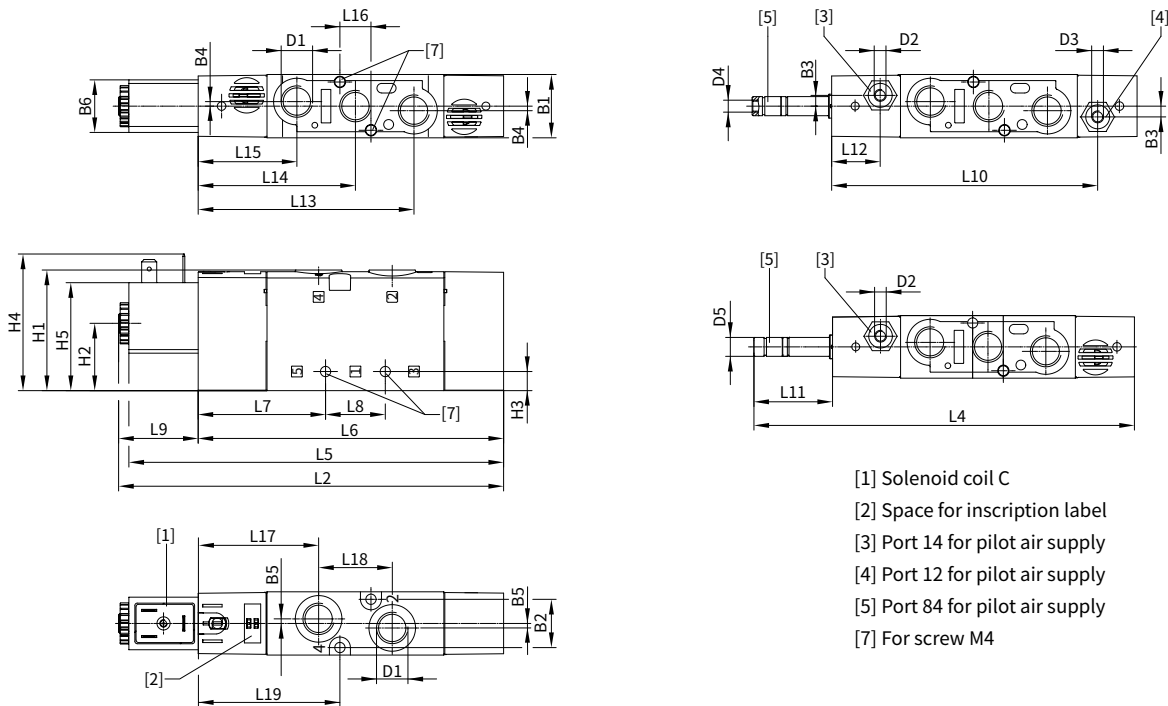
Solenoid valve VMDB-L, size 25

-Dimension - 3/2-way valve

Type	B1	B2	B3	B4	B5	B6	D1	D3	D4	D5φ	H1	H2	H3	H4	H5
VMDB-L25-23....-G14-...	26.5	20.2	-	1.9	1.9	22	G1/4	-	M5	8	50.5	28.2	8	57.2	45.2
VMDB-L25-23....-Z-G14-...			4.5					M5							

Type	L2	L4	L5	L6	L7	L8	L9	L11	L12	L14	L15	L16	L17	L19
VMDB-L25-23....-G14-...	129.2	128.1	123.8	94.8	53.3	25	34.4	33.3	-	65.8	41.3	13	50.4	59.3
VMDB-L25-23....-Z-G14-...									20.3					

Dimensions - 5/2-way single-solenoid valve



Type	B1	B2	B3	B4	B5	B6	D1	D2	D3	D4	D5φ	H1	H2	H3	H4	H5
VMDB-L25-25M-...-G14-...	26.5	20.2	-	1.9	1.9	22	G1/4	-	-	M5	8	50.5	28.2	8	57.2	45.2
VMDB-L25-25M-...-Z-G14-...			4.5					M5	M5							

Type	L2	L4	L5	L6	L7	L8	L9	L10	L11	L12	L13	L14	L15	L16
VMDB-L25-25M-...-G14-...	162.2	161.1	156.8	127.8	53.3	25	34.4	-	33.3	-	90.3	65.8	41.3	13
VMDB-L25-25M-...-Z-G14-...								111.3		20.3				

Type	L17	L18	L19
VMDB-L25-25M-...-G14-...	50.4	30.8	59.3
VMDB-L25-25M-...-Z-G14-...			

Actuator element

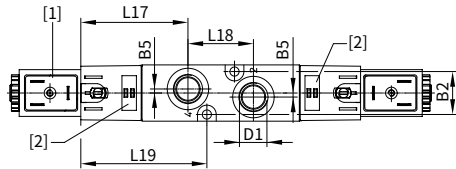
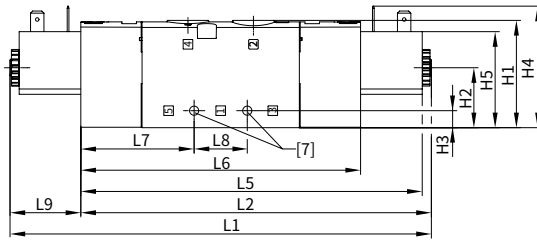
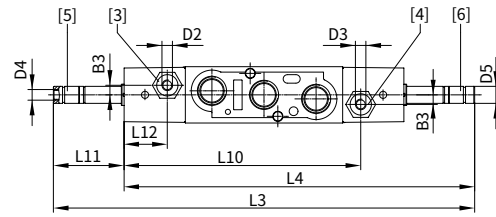
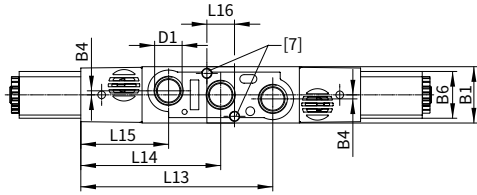
Control element

Service unit combination

Attachment

Solenoid valve VMDB-L, size 25

Dimensions - 5/2 and 5/3-way double-solenoid valve



- [1] Solenoid coil C
- [2] Space for inscription label
- [3] Port 14 for pilot air supply
- [4] Port 12 for pilot air supply
- [5] Port 84 for pilot air supply
- [6] Port 82 for pilot air supply
- [7] For screw M4

Type	B1	B2	B3	B4	B5	B6	D1	D2	D3	D4	D5φ	H1
VMDB-L25-35...-M-G14-...	26.5	20.2	-	1.9	1.9	22	G1/4	-	-	M5	8	50.5
VMDB-L25-35...-MZ-G14-...			4.5					M5	M5			
VMDB-L25-25B--G14-...			-					-				
VMDB-L25-25B-Z-G14-...			4.5					M5	M5			

Type	H2	H3	H4	H5	L1	L2	L3	L4	L5	L6	L7	L8
VMDB-L25-35...-M-G14-...	28.2	8	57.2	45.2	200.3	166	198.2	164.9	160.6	131.6	53.3	25
VMDB-L25-35...-MZ-G14-...												
VMDB-L25-25B--G14-...												
VMDB-L25-25B-Z-G14-...												

Type	L9	L10	L11	L12	L13	L14	L15	L16	L17	L18	L19
VMDB-L25-35...-M-G14-...	33.3	-	33.3	-	90.3	65.8	41.3	13	50.4	30.8	59.3
VMDB-L25-35...-MZ-G14-...		111.3		20.3							
VMDB-L25-25B--G14-...		-		-							
VMDB-L25-25B-Z-G14-...		111.3		20.3							

Solenoid valve VMDB-L, size 30

General technical data								
Valve function	3/2-way			5/2-way		5/3-way		
Valve code	23R	23U	25M	25B	35C	35P	35E	
Valve width [mm]	31							
Nominal width [mm]	9.4		9.4		8.9	8.1		
Design	Piston spool							
Flow direction	With external pilot, reversible							
Pilot air supply	Internal or external							
Type of control	Piloted							
Manual override	Non-detenting							
Overlap	Positive overlap							
Sealing principle	Soft							
Type of mounting	Optionally via through-hole							
Standard nominal flow rate q _{nN} [L/min]	2300		2300	2300	2000	1600		
Actuation type	Electrical							
Mounting position	Any							
Exhaust function	Can be throttled							
Connection	1, 2, 3	G3/8	G3/8	G3/8	G3/8	G3/8	G3/8	G3/8
	4, 5	-	-	G3/8	G3/8	G3/8	G3/8	G3/8
Pilot air connection 12/14	G1/8							
Pilot exhaust air port 12/84	M5							

Technical data - 3/2-way code		23R		23U	
Normal position		Normally closed		Normally open	
Stable position		Monostable		Monostable	
Reset method		Pneumatic spring		Mechanical spring	
Switching time [ms]	On	19	16	19	15
	Off	36	58	37	57
	Change	-	-	-	-

Technical data - 5/2-way code		M25		B25	
Normal position		-		-	
Stable position		Monostable		Bistable	
Reset method		Pneumatic spring		Mechanical spring	
Switching time [ms]	On	24	17	-	
	Off	49	62	-	
	Change	-	-	13	

Technical data - 5/3-way code		35C		35P		35E	
Normal position		Mid-position closed		Mid-position pressurised		Mid-position exhausted	
Stable position		Monostable					
Reset method		Mechanical spring					
Switching time [ms]	On	17	18	20			
	Off	76	75	74			
	Change	39	31	36			

Actuator element

Control element

Service unit combination

Attachment

Solenoid valve VMDB-L, size 30

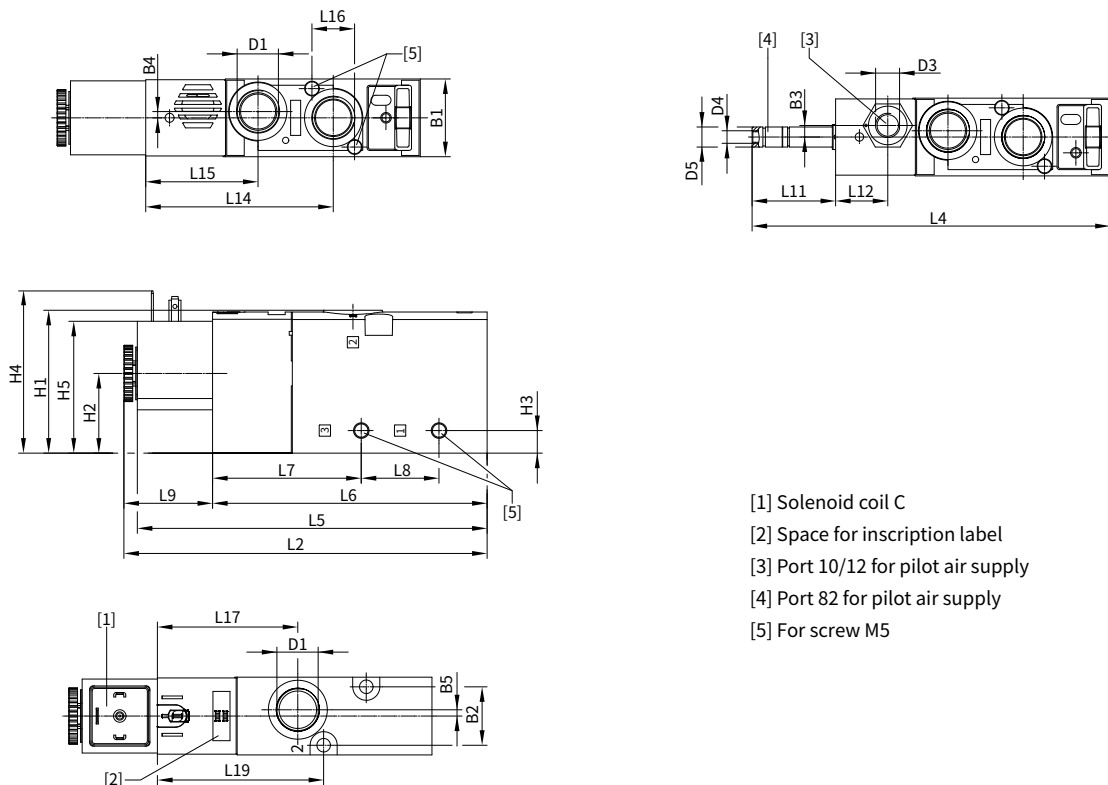
Safety characteristics	
Max. positive test pulse with logic 0[is]	2000 (valve with coil)
Max. negative test pulse with logic 1[is]	3600 (valve with coil)
Shock resistance	Shock test with severity level 2 to FN 942017-5 and EN 60068-2-27
Vibration resistance	Transport application test with severity level 2 to FN 942017-4 and EN 60068-2-6

Operating and environmental conditions				
Valve code	23R/U	25M	25B	35/C/P/E
Operating medium	Compressed air to ISO 8573-1:2010 [7:4:4]			
Operating pressure bar	Internal	2.5 ... 10	1.5 ... 10	2.5 ... 10
	External	-0.9 ... +10		
Pilot pressure bar		2.5 ... 10	1.5 ... 10	2.5 ... 10
Ambient temperature °C	- 10 ... +60			
Temperature of medium °C	-10 ... +60			

Electrical data		
Electrical connection	Via accessory	
Operating voltage	[V DC]	12,24 ± 10%
	[V AC]	110,220 ± 10%
Power	[W]	3.3
Duty cycle	[%]	100
Degree of protection to EN 60529	IP65, with plug socket	

Information on materials	
Housing	Die-cast aluminum
Seals	HNBR, NBR
Piston spool	Wrought aluminium alloy
Screw	Galvanised steel

Dimensions - 3/2-way valve



- [1] Solenoid coil C
- [2] Space for inscription label
- [3] Port 10/12 for pilot air supply
- [4] Port 82 for pilot air supply
- [5] For screw M5

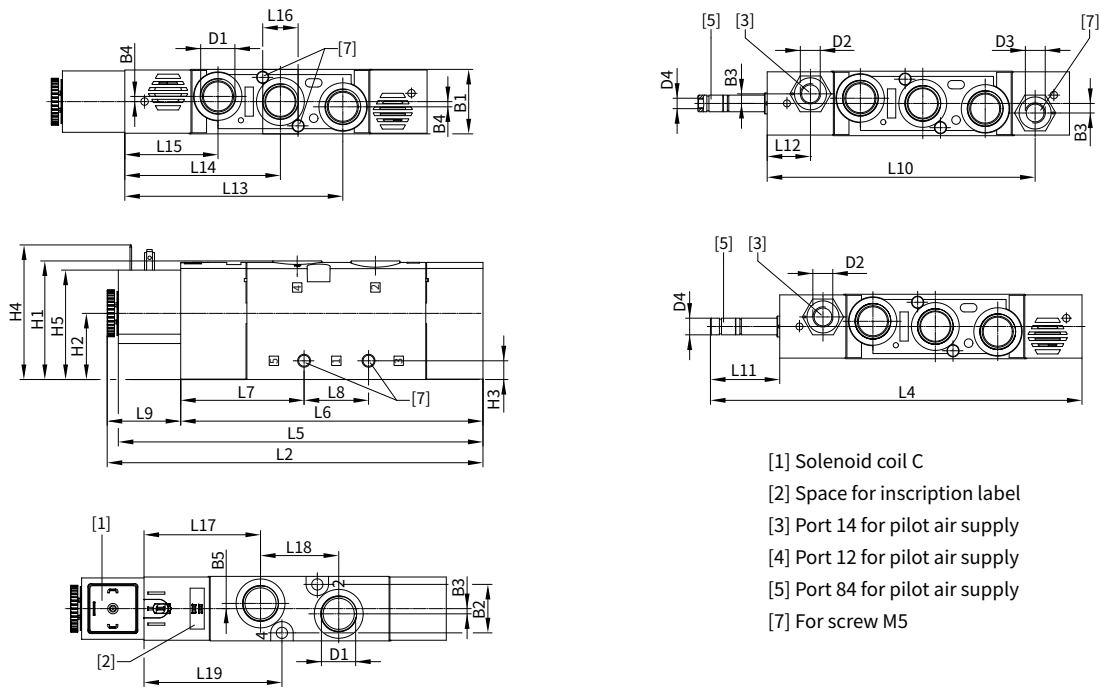
Solenoid valve VMDB-L. size 30

-Dimensions - 3/2-way valve

Type	B1	B2	B3	B4	B5	D1	D3	D4	D5φ	H1	H2	H3	H4	H5
VMDB-L30-23...-G38-...	31	23.3	-	2.5	2.5	G3/8	-	M5	8	57	31.8	9	63.7	51.6
VMDB-L30-23...-Z-G38-...			4.6				G1/8							

Type	L2	L4	L5	L6	L7	L8	L9	L11	L12	L14	L15	L16	L17	L19
VMDB-L30-23...-G38-...	144.9	142.8	139.5	109.5	59.3	31	35.4	33.3	-	74.8	44.8	17	56	66.3
VMDB-L30-23...-Z-G38-...									20.8					

Dimension - 5/2-way single-solenoid valve



Type	B1	B2	B3	B4	B5	D1	D2	D3	D4	D5φ	H1	H2	H3	H4	H5
VMDB-L30-25M-...-G38-...	31	23.3	-	2.5	2.5	G3/8	-	-	M5	8	57	31.8	9	63.7	51.6
VMDB-L30-25M-...-Z-G38-...			4.6				G1/8	G1/8							

Type	L2	L4	L5	L6	L7	L8	L9	L10	L11	L12	L13	L14	L15	L16
VMDB-L30-25M-...-G38-...	180.7	178.6	179.6	145.3	59.3	31	35.4	-	33.3	-	104.8	74.8	44.8	17
VMDB-L30-25M-...-Z-G38-...								128.8		20.8				

Type	L17	L18	L19
VMDB-L30-25M-...-G38-...	56	37.6	66.3
VMDB-L30-25M-...-Z-G38-...			

Actuator element

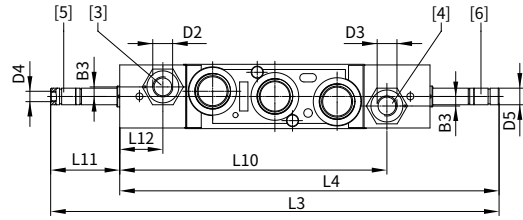
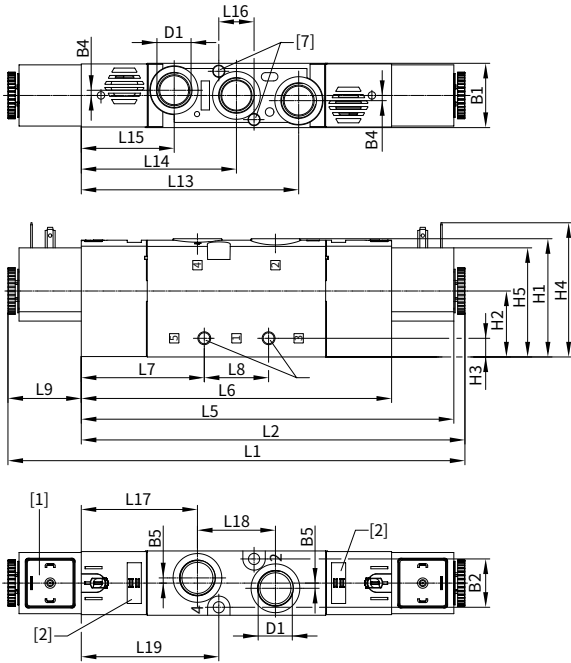
Control element

Service unit combination

Attachment

Solenoid valve VMDB-L, size 30

Dimensions - 5/3 and 5/2-way double-solenoid valve



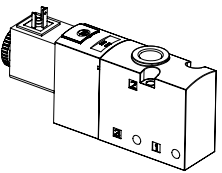
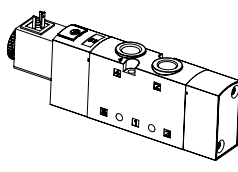
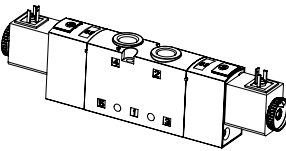
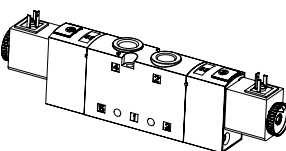
- [1] Solenoid coil C
- [2] Space for inscription label
- [3] Port 14 for pilot air supply
- [4] Port 12 for pilot air supply
- [5] Port 84 for pilot air supply
- [6] Port 82 for pilot air supply
- [7] For screw M5

Type	B1	B2	B3	B4	B5	D1	D2	D3	D4	D5φ	H1	H2	H3	H4	H5
VMDB-L30-35...-M-G38-...	31	23.3	-	2.5	2.5	G3/8	-	-	M5	8	57	31.8	9	63.7	51.6
VMDB-L30-35...-MZ-G38-...			4.6				G1/8	G1/8							
VMDB-L30-25B--G38-...			-				-	-							
VMDB-L30-25B-Z-G38-...			4.6				G1/8	G1/8							

Type	L1	L2	L3	L4	L5	L6	L7	L8	L9	L10
VMDB-L30-35...-M-G38-...	220.3	185	216.2	182.9	179.6	149.6	59.3	31	35.4	-
VMDB-L30-35...-MZ-G38-...										128.8
VMDB-L30-25B--G38-...										-
VMDB-L30-25B-Z-G38-...										128.8

Type	L11	L12	L13	L14	L15	L16	L17	L18	L19
VMDB-L30-35...-M-G38-...	33.3	-	104.8	74.8	44.8	17	56	37.6	66.3
VMDB-L30-35...-MZ-G38-...		20.8							
VMDB-L30-25B--G38-...		-							
VMDB-L30-25B-Z-G38-...		20.8							

Accessories

Key products range				
	Code	Valve function	Size	Type
3/2-way valve with solenoid coils (24 V DC)				
	Single-solenoid, normally closed, type C			
	23R-A	Pneumatic spring return Internal pilot air supply Non-reversible flow direction	20	VMDB-L20-23R-A-G18
			25	VMDB-L25-23R-A-G14
			30	VMDB-L30-23R-A-G38
	23R-M	Mechanical spring return Internal pilot air supply Non-reversible flow direction	20	VMDB-L20-23R-M-G18
			25	VMDB-L25-23R-M-G14
30			VMDB-L30-23R-M-G38	
5/2-way valve with solenoid coils (24 V DC)				
	Single-solenoid, normally closed, type C			
	25M-A	Pneumatic spring return Internal pilot air supply Non-reversible flow direction	20	VMDB-L20-25M-A-G18
			25	VMDB-L25-25M-A-G14
			30	VMDB-L30-25M-A-G38
	25M-M	Mechanical spring return Internal pilot air supply Non-reversible flow direction	20	VMDB-L20-25M-M-G18
			25	VMDB-L25-25M-M-G14
30			VMDB-L30-25M-M-G38	
	Double-solenoid, type C			
	25B	Internal pilot air supply Non-reversible flow direction	20	VMDB-L20-25B-G18
			25	VMDB-L25-25B-G14
30			VMDB-L30-25B-G38	
5/3-way valve with solenoid coils (24 V DC)				
	Mid-position closed, type C			
	35C	Mechanical spring return Internal pilot air supply Non-reversible flow direction	20	VMDB-L20-35C-M-G18
			25	VMDB-L25-35C-M-G14
30			VMDB-L30-35C-M-G38	

Actuator element

Control element

Service unit combination

Attachment