



1.65

HLSD90-39 TYPE

Electric On-Off Valve

Rated pressure (bar / psi)	20.7 / 300
Peak flow (L/min / gpm)	18.9 / 5

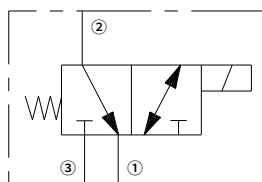
Features

- Quick response
- Compact size
- Oil-immersed DC solenoid
- Industry common cavity
- Hardened parts for long life and low leakage

Contents

Description	02
Operation	02
Ordering code	02
Technical data	03
Performance	03
Dimensions	04

Symbol



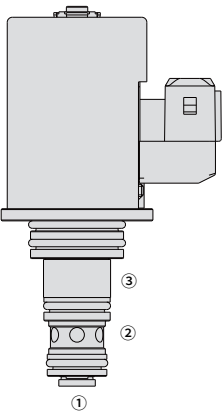
Description

A solenoid-operated, 3-way, direct-acting spool-type, flange mounted hydraulic directional valve designed.

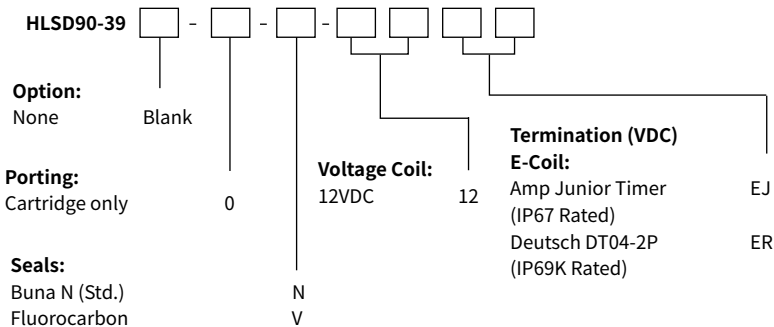
Operation

When de-energized, the valve allows flow from ② to ① , while blocking flow at ③ .
When energized, the cartridge's spool shifts to open from ③ to ② , while blocking flow out ① .

Note: Need to purchase flange cartridge separately.



Ordering Code



Materials

Cartridge:

Weight: 0.28 kg; Steel with hardened work surfaces. Zinc-plated exposed surfaces; Buna N (Std.) seal.

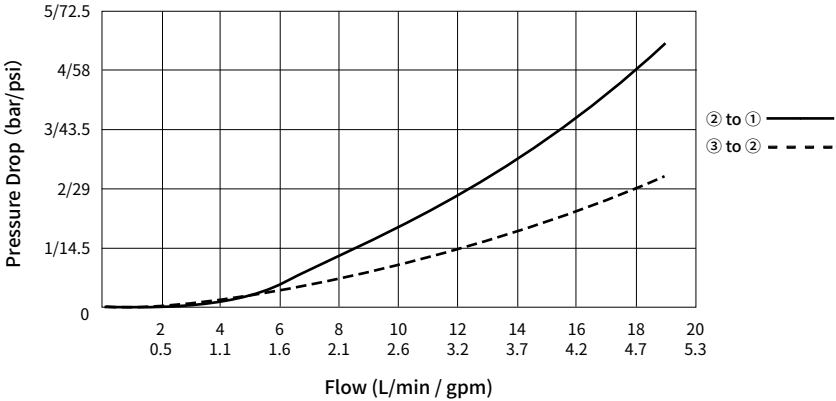
Standard Ported Body:

Anodized high-strength aluminum alloy, rated to 240 bar; Ductile iron and steel bodies available; Dimensions may differ, consult factory.

Technical Data

Rated pressure	20.7 bar (300 psi)
Maximum pressure	41.4 bar (600 psi)
Peak flow	18.9 L/min (5.0 gpm)
Voltage range	12 V±15%
Coil resistance	9.8 OHM±5% @ 20°C
Cavity	TC90-3 (See technical reference)
Fluid	Mineral-based or synthetics with lubricating properties
Viscosity range	7.4 to 420 mm²/s
Temperature range	-40 to 100 °C (Buna N seals) -26 to 204 °C (Fluorocarbon seals)
Degree of fluid contamination	The minimum pollution level is ISO4406 level 20/18/14, and level 17/15/13 is recommended to prolong the service life

Performance (Cartridge Only)



Dimensions

01

