



7.2

FBRC TYPE

Pipe Burst Safety Valve

Drift diameter	10	12	15
Rated pressure (bar / psi)	420/6000	420/6000	420/6000
Rated flow (L/min / gpm)	50/13	120/31	150/39

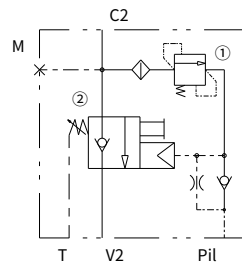
Features

- Compact design, stable and reliable
- Fast response, shock resistant
- Conforms to ISO 8643 standard
- Enhanced system safety

Contents

Description	02
Operation	02
Ordering code	02
Materials	02
Technical data	03
Performance	03
Dimensions	04

Symbol

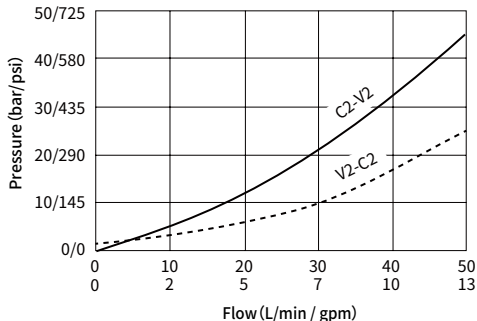


Technical Data

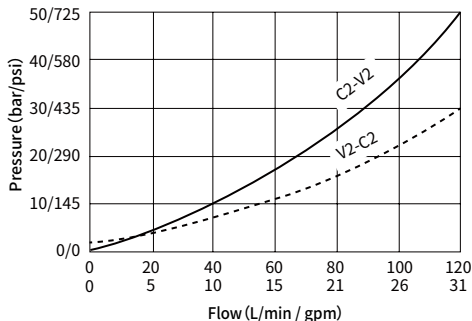
Rated pressure	420 bar (6000 psi)	
Rated flow	10E	50 L/min (13 gpm)
	12E	120 L/min (31 gpm)
	15E	150 L/min (39 gpm)
Pressure adjustment range of relief valve	150 ~ 420 bar	
Pilot opening pressure adjustment range	10E/12E	3 ~ 15 bar
	15E	7 ~ 20 bar
Weight	10E: 2.0 kg; 12E: 2.6 kg; 15E: 3.8 kg	
Fluid	Mineral-based or synthetics with lubricating properties	
Viscosity range	7.4 to 420 mm ² /s	
Temperature range	-40 to 100 °C (Buna N seals)	
	-54 to 107 °C (Polyurethane seals)	
	-26 to 204 °C (Fluorocarbon seals)	
Degree of fluid contamination	The minimum pollution level is ISO4406 level 20/18/14, and level 17/15/13 is recommended to prolong the service life	

Performance (Cartridge Only)

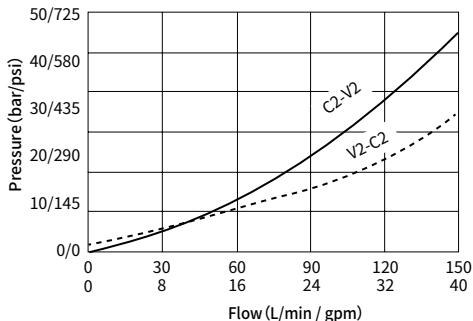
FBRC 10E



FBRC 12E



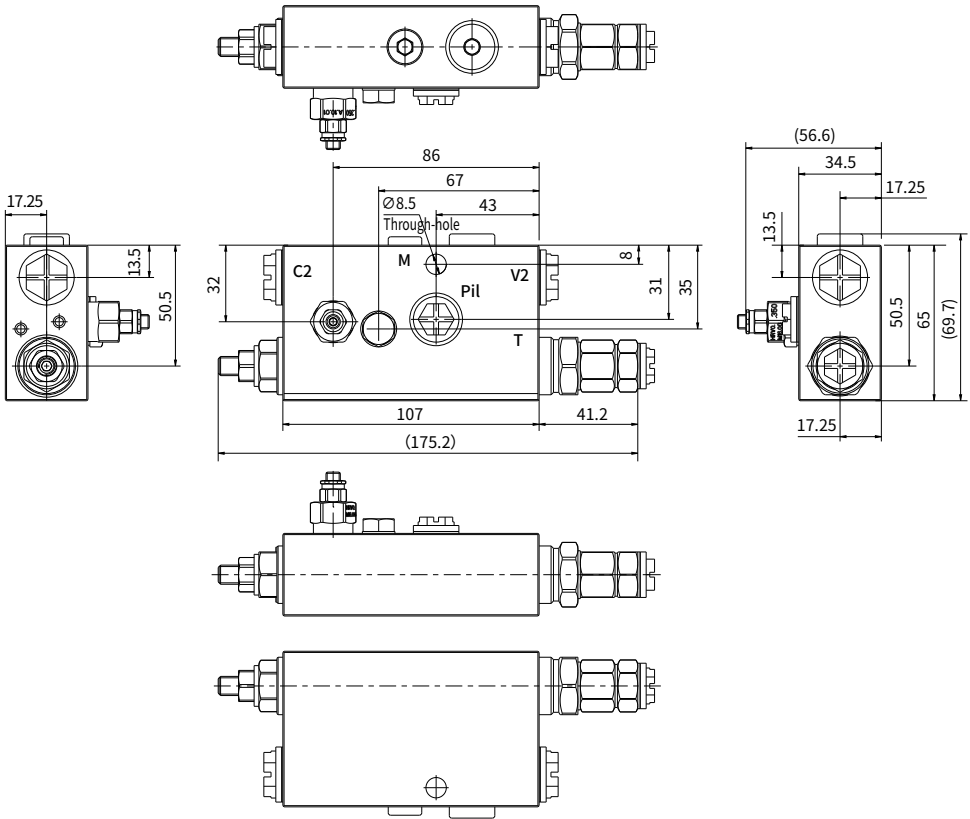
FBRC 15E



Dimensions

(Dimensions in mm)

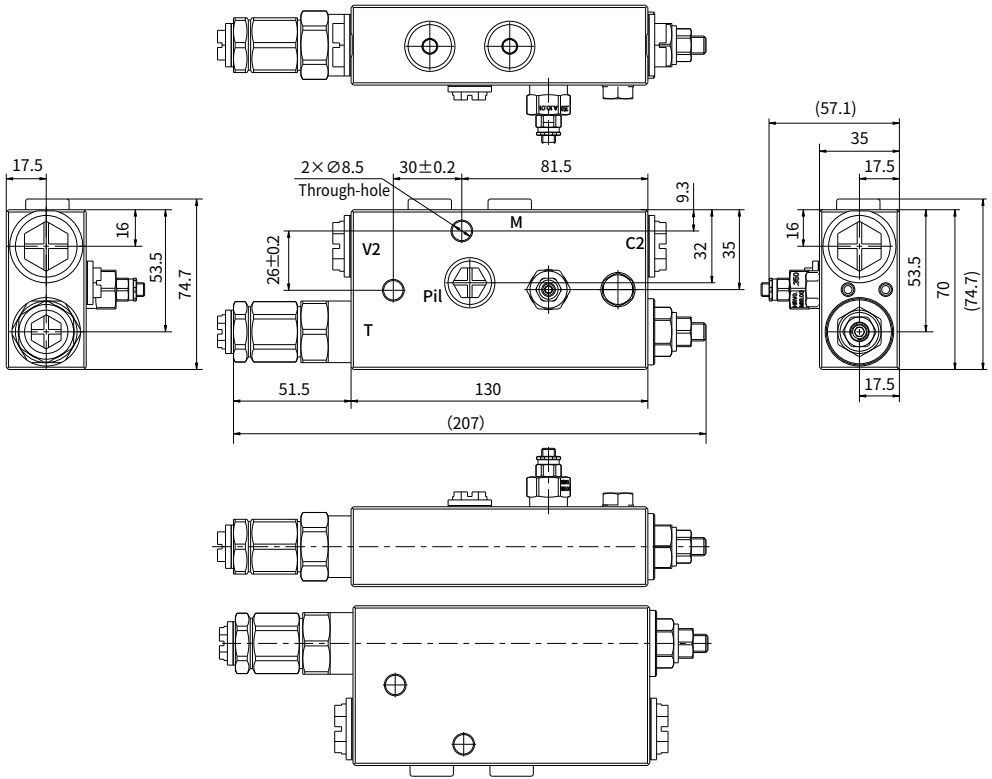
FBRC10E



Dimensions

(Dimensions in mm)

FBRC12E



Dimensions

(Dimensions in mm)

FBRC15E

