



3.17

# Pressure sequence valve direct operated

## Type DZ6DP...L5X

Size 6  
up to 315 bar  
up to 60 L/min



### Contents

Function and configuration	02
Symbols	02
Ordering code	03
Technical data	03
Characteristic curves	03
Unit dimensions	04

### Features

- Direct operated
- Porting pattern to DIN 24 340, form A and ISO 4401
- 5 pressure ratings
- 2 adjustment elements:
  - Rotary knob
  - Adjustable bolt with protective cap
- Pressure gauge connection
- Check valve, optional

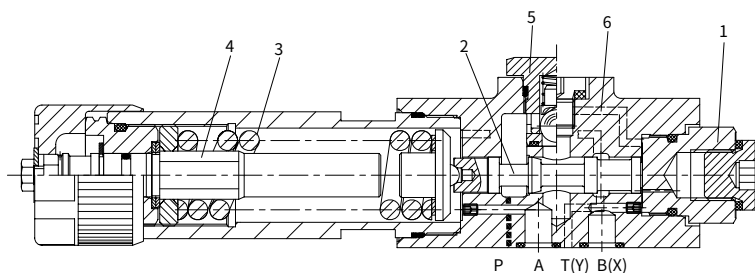
## Function and configuration

The valve type DZ6DP is a direct operated pressure sequence valve. It is used for the switching over for pressure dependent connection of a secondary system. The sequence pressure is setting via the adjusting element(4).

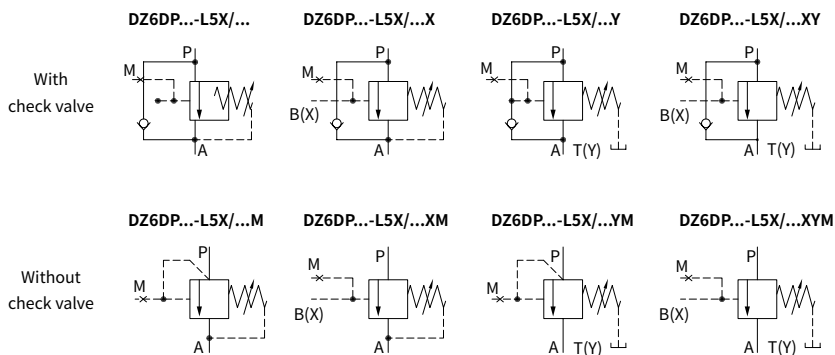
The spring (3) holds the control spool (2) in the neutral position, the valve is blocked. The pressure in channel P is acting at the end surface of the control spool (2) opposite the spring (3) via the control line (6). If the pressure in channel P reaches the setting value of the spring(3), the control spool (2) is moved to the left and the connection P to A is opened. In this case, fluid flows from channel P to A without pressure drop in channel P.

The control signal is adopted internally via the control line (6) from channel P or externally via port B (X). Depending on the use of the valve the leakage oil drain is externally via port T (Y) or internally via A.

### Type DZ6DP1-L5X/...



## Symbols



## Ordering code

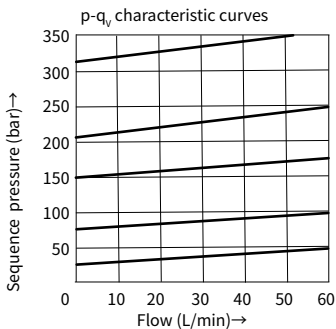
DZ6DP		-	L5X	/		/		*
Direct operated pressure sequence valve nominal size 6		Further details in clear text						
Rotary knob =1		No code = NBR seals						
Adjustable bolt with protective cap =2		V = FKM seals						
Series L50 to L59 = L5X (L50 to L59 series: unchanged installation and connection dimensions)		Pressure tapping thread						
		No code = Incha thread						
		2 = Metric thread						
		No code = With check valve						
		M = Without check valve						
Max. secondary pressure 25 bar =2.5		No code = Pilot oil supply internal, oil drain internal						
Max. secondary pressure 75 bar =7.5		X = Pilot oil supply external, oil drain internal						
Max. secondary pressure 150 bar =15		Y = Pilot oil supply internal, oil drain external						
Max. secondary pressure 210 bar =21		XY = Pilot oil supply external, oil drain external						
Max. secondary pressure 315 bar =31.5 (Note 1)								

**Notes 1:** 315bar only for adjustment form "2" and without check valve .

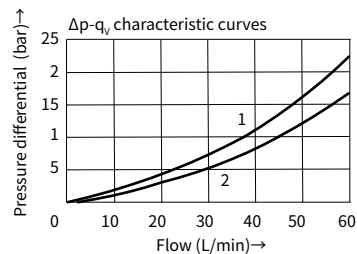
## Technical data

Fluid		Mineral oil suitable for NBR and FKM seal
		Phosphate ester for FKM seal
Fluid temperature range °C		-30 to +80 (NBR seal)
		-20 to +80 (FKM seal)
Viscosity range mm <sup>2</sup> /s		10 to 800
Degree of contamination		Maximum permissible degree of fluid contamination: Class 9. NAS 1638 or 20/18/15, ISO4406
Max. operating pressure	Port P, A, B(X) bar	315
	Port T(Y) bar	160
Max. adjustable sequence pressure bar		25; 75; 150; 210; 315
Max. flow-rate L/min		60
Weight kg		Approx. 1.6

## Characteristic curves (Measured at $\theta_{oil}=40^{\circ}\text{C} \pm 5^{\circ}\text{C}$ , using HLP46)



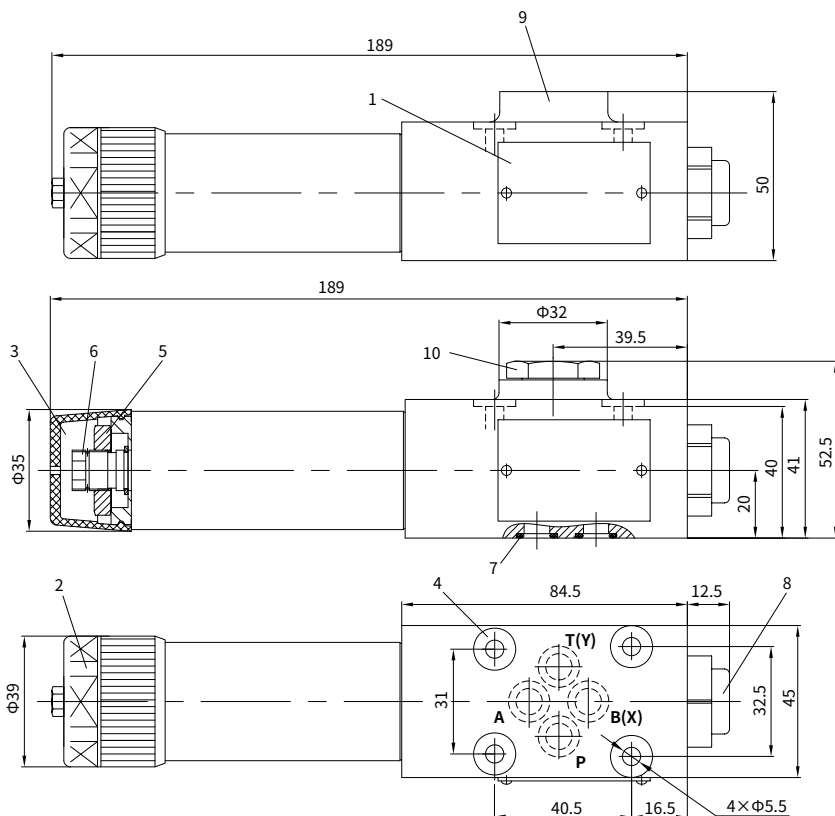
1.  $\Delta p$ -q<sub>v</sub> characteristic curves A to P via check valve
2.  $\Delta p$ -q<sub>v</sub> characteristic curves P to A



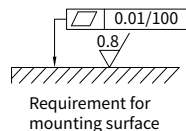
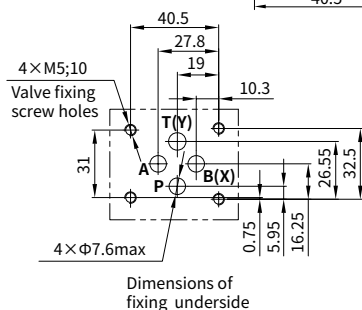
The characteristic curves are valid for output pressure = zero in the complete flow range.

## Unit dimensions

(Dimensions in mm)



- 1 Name plate
- 2 Adjustment element "1"
- 3 Adjustment element "2"
- 4 Valve mounting holes
- 5 Lockable screw S=24
- 6 Internal hexagon bolt S=10
- 7 O-rings 9.25×1.78  
(Ports A, B, P, T)
- 8 Pressure gauge connection  
G1/4 or M14×1.5, 12 deep  
Hexagon wrench S=6
- 9 Without check valve
- 10 With check valve



**It must be ordered separately,  
if connection plate is need**

Type: G341/01(G1/4), G341/02 (M14×1.5)  
G342/01(G3/8), G342/02 (M18×1.5)  
G502/01(G1/2), G502/02 (M22×1.5)

**Valve mounting screws:**

GB/T 70.1- M5×50-10.9 internal hexagon screw  
Tightening torque  $M_A = 8.9\text{ Nm}$