



7.3

50CB90-2A TYPE

Counterbalance Valve

Rated pressure (bar / psi)	350 / 5000
Rated flow (L/min / gpm)	90 / 24

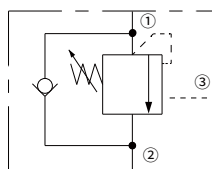
Features

- Standard
- Internal oil drain
- Pilot control
- Compact
- High reliability
- More durable

Contents

Description	02
Operation	02
Ordering code	02
Materials	02
Technical data	03
Performance	03
Dimensions	04

Symbol

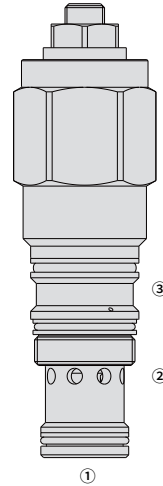


Description

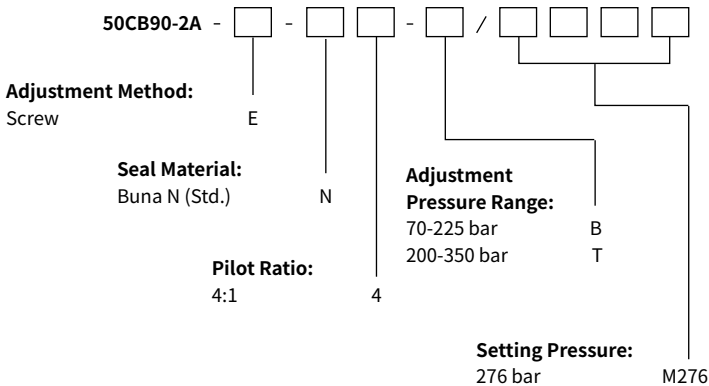
Cartridge type external pilot operated counterbalance valves are mainly used to balance the pressure in the hydraulic system and can control the flow of the liquid circuit.

Operation

The valve consists of 2 sections, each consisting of a check valve and a relief valve: the check valve allows the free flow of liquid into the actuator and then holds the load to prevent reverse movement; when pilot pressure is applied, the pressure setting of the relief valve decreases proportionally to the set ratio until it opens and allows a controlled reverse flow.



Ordering Code



Materials

Cartridge:

Weight: 0.4 kg; Steel with hardened work surfaces. Zinc-plated exposed surfaces; Buna N (Std.) seal.

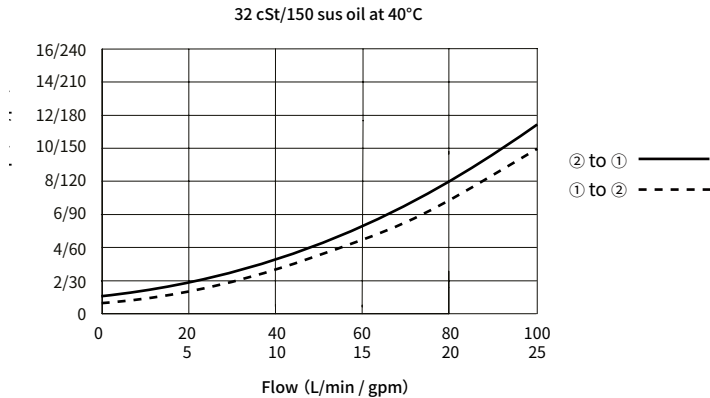
Standard Ported Body:

Anodized high-strength aluminum alloy, rated to 240 bar; Ductile iron and steel bodies available; Dimensions may differ, consult factory.

Technical Data

Rated pressure	350 bar (5000 psi)
Rated flow	90 L/min(24 gpm)
Pilot ratio	4:1
Internal leakage	≤ 5 drops/min @ 80% of pressure setting
Cavity	T-2A (See technical reference)
Fluid	Mineral-based or synthetics with lubricating properties
Viscosity range	7.4 to 420 mm ² /s
Temperature range	-40 to 100 °C (Buna N seals)
Degree of fluid contamination	The minimum pollution level is ISO4406 level 18/16/13, and level 15/13/11 is recommended to prolong the service life

Performance (Cartridge Only)



Dimensions

