



7.1

50CB30-11A TYPE

Counterbalance Valve

| | |
|----------------------------|------------|
| Rated pressure (bar / psi) | 350 / 5000 |
| Rated flow (L/min / gpm) | 30 / 7.9 |

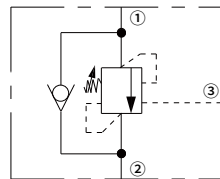
Features

- Standard
- Internal oil drain
- Pilot control
- Compact
- High reliability
- More durable

Contents

| | |
|----------------|----|
| Description | 02 |
| Operation | 02 |
| Ordering code | 02 |
| Materials | 02 |
| Technical data | 03 |
| Performance | 03 |
| Dimensions | 04 |

Symbol

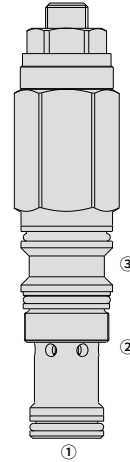


Description

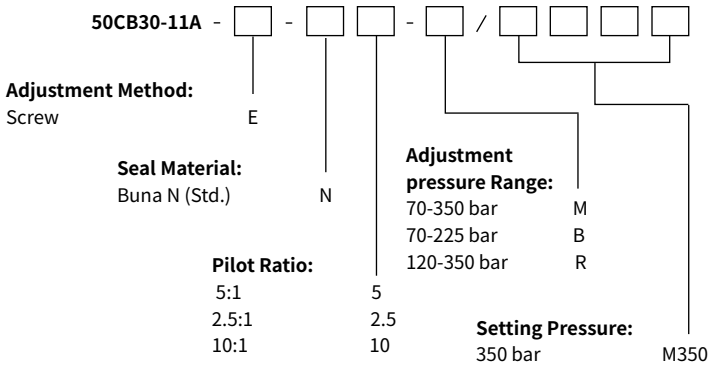
Cartridge type external pilot operated counterbalance valves are mainly used to balance the pressure in the hydraulic system and can control the flow of the liquid circuit.

Operation

The valve consists of 2 sections, each consisting of a check valve and a relief valve: the check valve allows the free flow of liquid into the actuator and then holds the load to prevent reverse movement; when pilot pressure is applied, the pressure setting of the relief valve decreases proportionally to the set ratio until it opens and allows a controlled reverse flow.



Ordering Code



Materials

Cartridge:

Weight: 0.2 kg; Steel with hardened work surfaces. Zinc-plated exposed surfaces; Buna N (Std.) seal.

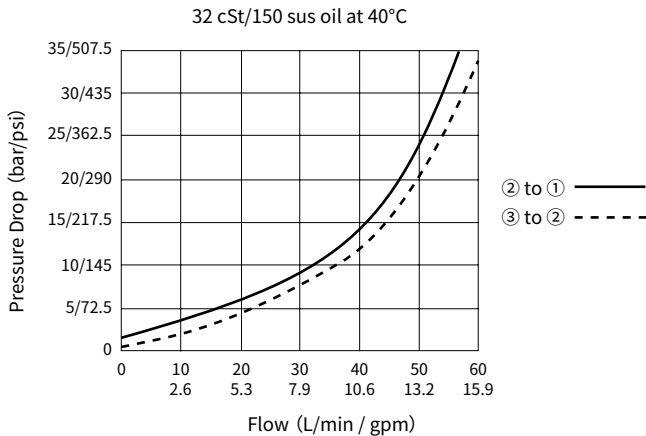
Standard Ported Body:

Anodized high-strength aluminum alloy, rated to 240 bar; Ductile iron and steel bodies available; Dimensions may differ, consult factory.

Technical Data

| | |
|-------------------------------|----------------------------------------------------------------------------------------------------------------------|
| Rated pressure | 350 bar (5000 psi) |
| Rated flow | 30 L/min(7.9 gpm) |
| Adjustment pressure range | 70-350 bar |
| Pilot ratio | 2.5:1; 5:1; 10:1 |
| Internal leakage | ≤ 5 drops/min @ 80% of pressure setting |
| Cavity | T-11A (See technical reference) |
| Fluid | Mineral-based or synthetics with lubricating properties |
| Viscosity range | 7.4 to 420 mm ² /s |
| Temperature range | -40 to 100 °C (Buna N seals) |
| Degree of fluid contamination | The minimum pollution level is ISO4406 level 18/16/13, and level 15/13/11 is recommended to prolong the service life |

Performance (Cartridge Only)



Dimensions

