



4.6

40RA08-28 TYPE

Relief, Direct-Acting Poppet

Maximum pressure (bar / psi)	276 / 4000
Peak flow (L/min / gpm)	38 / 10 (See performance chart)

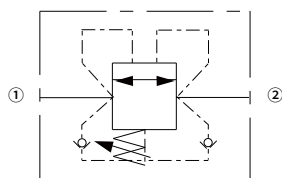
Features

- Adjustments cannot be backed out of the valve
- Rapid response to pressure changes
- Hardened parts for long life

Contents

Description	02
Operation	02
Ordering code	02
Materials	02
Technical data	03
Performance	03
Dimensions	04

Symbol

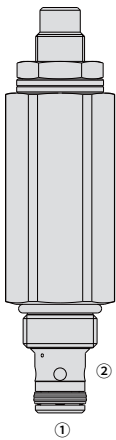


Description

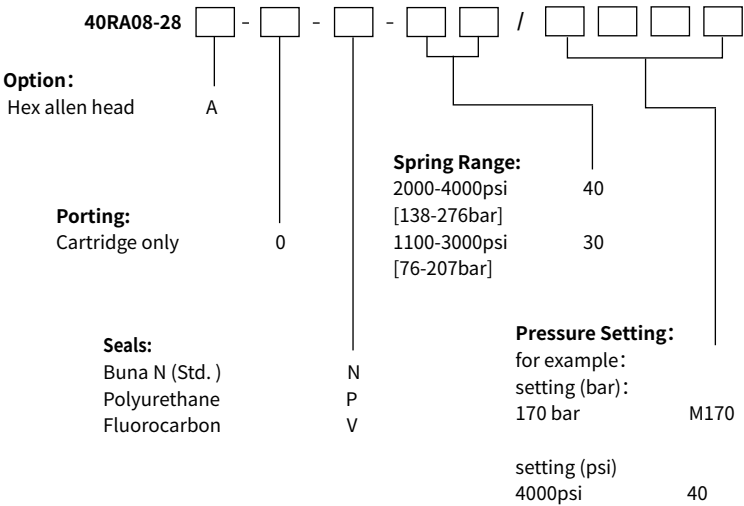
A screw in, cartridge style, direct acting, differential area, poppet type, internally vented, bidirectional hydraulic relief valve intended for use as a pressure limiting device for common hydraulic circuit protection.

Operation

The 40RA08-28 blocks flow from either port ① or port ② . on attainment of a predetermined pressure at either port ① or port ② , the spring-opposed poppet is forced from its seat. The cartridge offers fast response to load changes in typical hydraulic circuits requiring low hysteresis, low pressure rise and low internal leakage.



Ordering Code



Materials

Cartridge:
Weight: 0.26 kg; Steel with hardened work surfaces. Zinc-plated exposed surfaces; Buna N(Std.) seal.

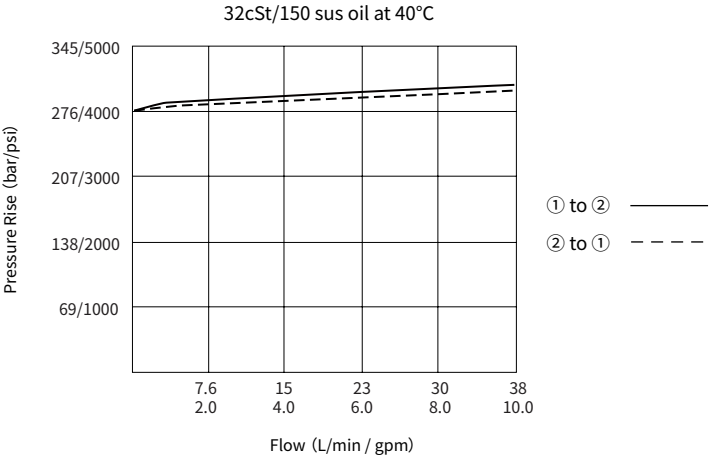
Standard Ported Body:
Anodized high-strength aluminum alloy, rated to 240 bar; Ductile iron and steel bodies available; Dimensions may differ, consult factory.

Technical Data

Maximum pressure	276 bar (4000 psi)
Peak flow	See performance chart
Internal leakage	≤ 1 mL/min (20 d/min) @ 85% of setting pressure
Crack pressure defined	bar (psi) evident at 0.95 L/min attained
Cavity	VC08-2 (See technical reference)
Fluid	Mineral-based or synthetics with lubricating properties
Viscosity range	7.4 to 420 mm ² /s
Temperature range	-54 to 107 °C (Polyurethane seals)
	-40 to 100 °C (Buna N seals)
	-26 to 204 °C (Fluorocarbon seals)
Degree of fluid contamination	The minimum pollution level is ISO4406 level 18/16/13, and level 15/13/11 is recommended to prolong the service life

03

Performance (Cartridge Only)



Dimensions

