



1.51

35SD12-24 TYPE

Solenoid Directional Valve

Rated pressure (bar / psi) 240 / 3500
 Peak flow (L/min / gpm) 75.8 / 20 (See performance chart)

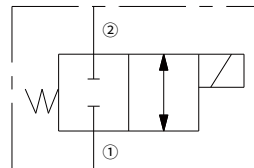
Features

- Continuous-duty rated coil
- Both ports may be fully pressurized
- Cartridges are voltage interchangeable
- Efficient wet-armature construction
- Optional waterproof E-Coils rated up to IP69K
- Industry common cavity
- Hardened parts for long life and low leakage

Contents

Description	02
Operation	02
Ordering code	02
Materials	02
Technical data	03
Performance	03
Dimensions	04

Symbol



Description

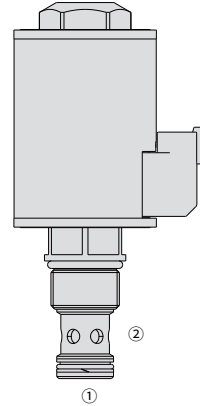
A solenoid-operated, 2-position, 2-way, normally closed, direct-acting spool-type, screw-in hydraulic cartridge valve, designed to function as a bidirectional blocking valve.

01

Operation

When de-energized, the 35SD12-24 blocks flow in both directions.

When energized, the cartridge's spool shifts to open the bidirectional flow path.



Ordering Code

	35SD12-24	<input type="checkbox"/>	-	<input type="checkbox"/>	-	<input type="checkbox"/>	-	<input type="checkbox"/>	<input type="checkbox"/>	<input type="checkbox"/>	<input type="checkbox"/>	<input type="checkbox"/>	
Option:	None	Blank											
Porting	Cartridge only			0									
Seals:	Buna N (Std.)							N					
	Fluorocarbon							V					
									Voltage				
									Std. Coil:				
									Less Coil	00			
									12VDC	12			
									24VDC	24			
												Termination (VDC)	
												E-Coil:	
												Deutsch DT04-2P	ER
												(IP69K Rated)	
												Dual Spades	ES
												(IP65 Rated)	

Materials

Cartridge:

Weight: 0.4 kg; Steel with hardened work surfaces. Zinc-plated exposed surfaces; Buna N (Std.) seal.

Standard Ported Body:

Anodized high-strength aluminum alloy, rated to 240 bar; Ductile iron and steel bodies available; Dimensions may differ, consult factory.

Standard Coil: Consult factory.

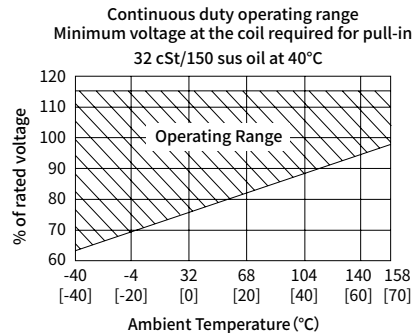
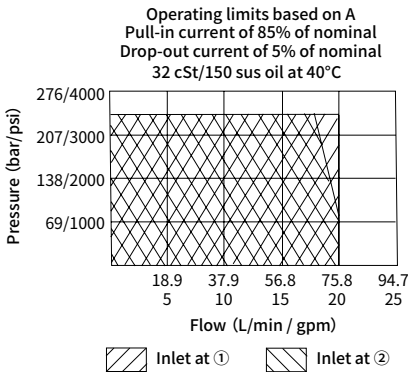
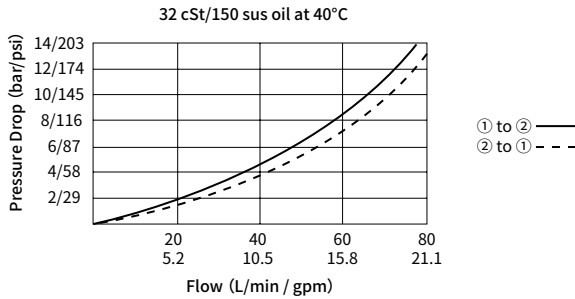
E-Coil:

Weight: 0.14 kg; Perfect wound, fully encapsulated with rugged external metal shell; Rated up to IP69K with Deutsch sockets.

Technical Data

Rated pressure	240 bar (3500 psi)	
Peak flow	See performance chart	
Internal leakage	≤ 400 mL/min @ 240 bar	
Initial coil current draw at 20°C	2.8 A at 12VDC; 1.4 A at 24VDC	
Coil duty rating	See performance chart	
Response time	Pull-In	100 msec
	Drop-Out	100 msec
Cavity	VC12-2 (See technical reference)	
Fluid	Mineral-based or synthetics with lubricating properties	
Viscosity range	7.4 to 420 mm ² /s	
Temperature range	-40 to 100 °C (Buna N seals)	
	-26 to 204 °C (Fluorocarbon seals)	
Degree of fluid contamination	The minimum pollution level is ISO4406 level 20/18/14, and level 17/15/13 is recommended to prolong the service life	

Performance (Cartridge Only)



Dimensions

