



2.27

# 35SD10-28 TYPE

## Solenoid Directional Valve

Rated pressure (bar / psi)	240 / 3500
Peak flow (L/min / gpm)	75.7 / 20

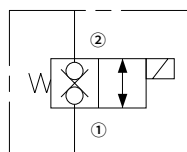
### Features

- Continuous-duty rated coil
- Efficient wet-armature construction
- Cartridges are voltage interchangeable
- Optional waterproof E-Coils rated up to IP69K
- Industry common cavity
- Hardened parts for long life and low leakage

### Contents

Description	02
Operation	02
Ordering code	02
Materials	02
Technical data	03
Performance	03
Dimensions	04

### Symbol

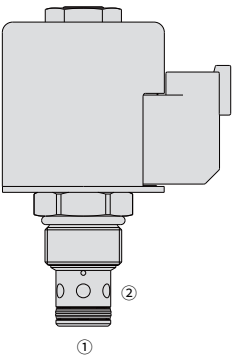


Description

A solenoid-operated, 2-way, normally closed, internally piloted, poppet-type, bi-directional blocking, screw-in hydraulic cartridge valve, designed for low leakage in load-holding applications.

Operation

When de-energized, the valve blocks flow in both directions.  
When energized, the valve's poppet opens on its seat, allowing flow from ② to ① or ① to ②.



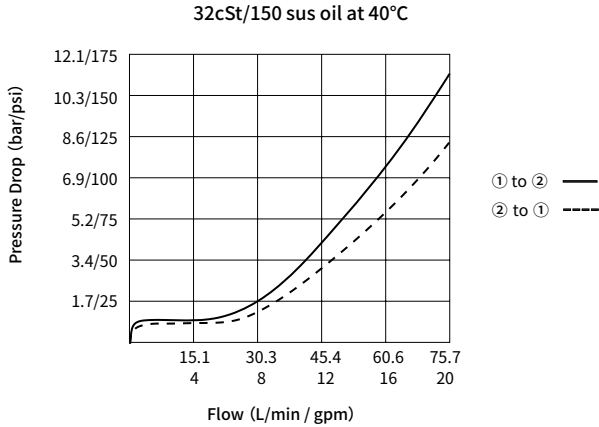
Ordering Code

35SD10-28		-	-	-	-	-	-
Option:		Blank					
None							
Cartridge only		0					
Seals:							
Buna N (Std.)		N					
Polyurethane		P					
Fluorocarbon		V					

# Technical Data

Rated pressure		240 bar (3500 psi)
Peak flow		75.7 L/min (20 gpm)
Internal leakage		≤ 0.25 mL/min (5 drops /min ) @240 bar
Coil duty rating		Continuous from 85% to 115% of nominal voltage
Initial coil current draw at 20°C	E-Coil	1.7 A at 12VDC; 0.85 A at 24VDC
	D-Coil	1.67 A at 12VDC; 0.83 A at 24VDC
Minimum pull-in voltage		85% of nominal at 240 bar
Cavity		VC10-2 (See technical reference)
Fluid		Mineral-based or synthetics with lubricating properties
Viscosity range		7.4 to 420 mm <sup>2</sup> /s
Temperature range		-40 to 100 °C (Buna N seals)
		-54 to 107 °C (Polyurethane seals)
		-26 to 204 °C (Fluorocarbon seals)
Degree of fluid contamination		The minimum pollution level is ISO4406 level 18/16/13, and level 15/13/11 is recommended to prolong the service life

## Performance (Cartridge Only)



Dimensions

( Dimensions in mm )

