



1.18

35SD08-47B TYPE

Solenoid Directional Valve

Rated pressure (bar / psi) 240 / 3500
Peak flow (L/min / gpm) 11.4/3 (See performance chart)

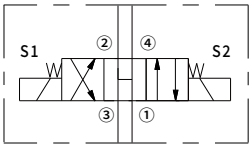
Features

- Continuous-duty rated coil
- Efficient wet-armature construction
- Cartridges are voltage interchangeable
- Optional waterproof E-Coils rated up to IP69K
- Hardened parts for long life

Contents

Description	02
Operation	02
Ordering code	02
Materials	02
Technical data	03
Performance	03
Dimensions	04

Symbol



Description

A solenoid-operated, 4-way,3-position,direct-acting,spool-type,connected center,screm-in hydraulic cartridge valve.

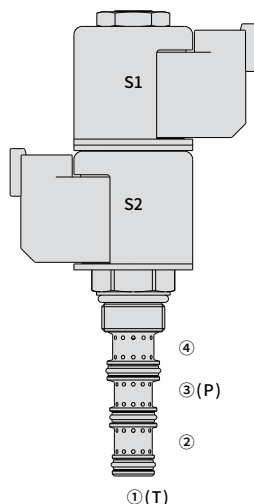
Operation

When de-energized, the valve allows flow to all ports. When coil #1(S1) is energized, flow is allowed from ③ to ④, and from ② to ①.

When coil #2(S2) is energized, flow is allowed from ③ to ②, and from ④ to ①.

In circuits where work port flows are unequal due to cylinder ratios, the higher return flow should be directed to port ②.

While ① may be fully pressurized, it is not intended for use as the valve's inlet.



Ordering Code

35SD08-47B		-	-	-	-	-	-	-
Option:	Blank							
Porting:	Cartridge only	0						
Seals:	Polyurethane (Std.)		P					
	Buna N		N					
	Fluorocarbon		V					
				Voltage				
				Std. Coil:				
				Less Coil	00			
				10VDC	10			
				12VDC	12			
				20VDC	20			
				24VDC	24			
				28VDC	28			
						Termination (VDC)		
						E-Coil:		
						Deutsch DT04-2P		ER
						(IP69K Rated)		
						Lead wires (2)		EL
						(IP69K Rated)		
							Termination (VDC)	
						D-Coil:		
						Dual Spades		DS
						(SAE J858a, IP65K Rated)		
						DIN 43650		DG
						(IP65K Rated)		
						Lead wires (2)		DL
						(IP65K Rated)		

Materials

Cartridge:

Weight: 0.2 kg; Steel with hardened work surfaces. Zinc-plated exposed surfaces; Polyurethane (Std.) seal.

Standard Ported Body:

Anodized high-strength aluminum alloy, rated to 240 bar; Ductile iron and steel bodies available;
Dimensions may differ, consult factory.

Standard Coil: Consult factory.

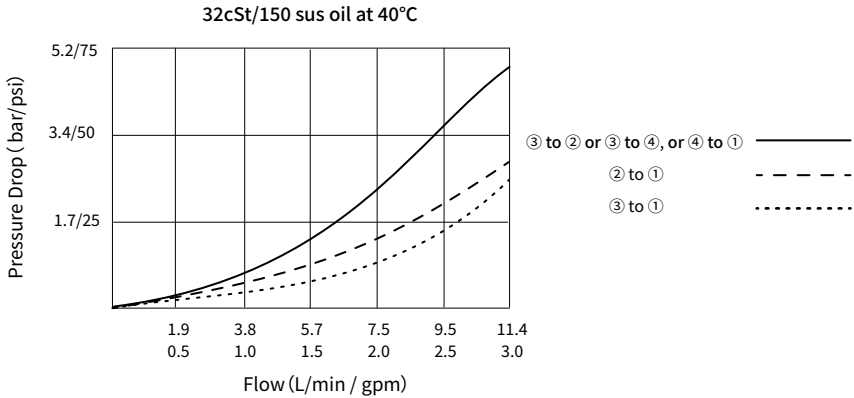
E-Coil:

Weight: 0.14 kg; Perfect wound, fully encapsulated with rugged external metal shell; Rated up to IP69K with Deutsch sockets.

Technical Data

Rated pressure	240 bar (3500 psi)	
Peak flow	See performance chart	
Internal leakage	≤ 164 mL/min @207 bar	
Coil duty rating	Continuous from 85% to 115% of nominal voltage	
Initial coil current draw at 20°C	E-Coil	1.4 A at 12VDC; 0.7 A at 24VDC
	D-Coil	1.2 A at 12VDC; 0.6 A at 24VDC
Minimum pull-in voltage	85% of nominal at 207 bar	
Cavity	VC08-4 (See technical reference)	
Fluid	Mineral-based or synthetics with lubricating properties	
Viscosity range	7.4 to 420 mm ² /s	
Temperature range	-54 to 107 °C (Polyurethane seals)	
	-40 to 100 °C (Buna N seals)	
	-26 to 204 °C (Fluorocarbon seals)	
Degree of fluid contamination	The minimum pollution level is ISO4406 level 20/18/14, and level 17/15/13 is recommended to prolong the service life	

Performance (Cartridge Only)



Dimensions

01

