



2.41

50SD58-30 TYPE

Solenoid Directional Valve

Rated pressure (bar / psi)	345 / 5000
Peak flow (L/min / gpm)	15.1 / 4 (See performance chart)

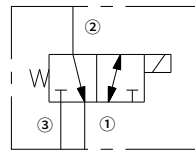
Features

- Continuous-duty rated coil
- Cartridges are voltage interchangeable
- Optional waterproof E-Coils rated up to IP69K
- Efficient wet-armature construction
- Hardened parts for long life

Contents

Description	02
Operation	02
Ordering code	02
Materials	02
Technical data	03
Performance	03
Dimensions	04

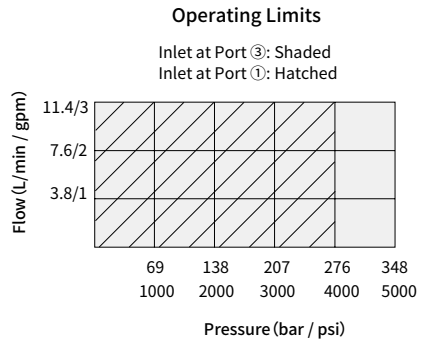
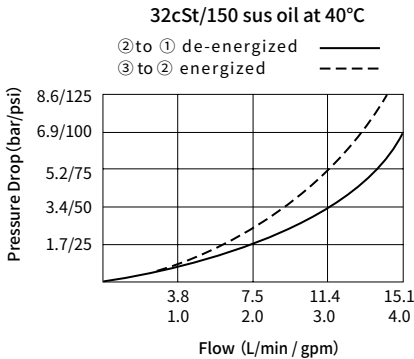
Symbol



Technical Data

Rated pressure	345 bar (5000 psi)	
Peak flow	See performance chart	
Internal leakage	Port ③ (De-energized): ≤ 131 mL/min@345 bar	
	Port ① (Energized): ≤ 279 mL/min@345 bar	
Coil duty rating	Continuous from 85% to 115% of nominal voltage	
Initial coil current draw at 20°C	E-Coil	1.7 A at 12VDC; 0.85 A at 24VDC
	D-Coil	1.67 A at 12VDC; 0.83 A at 24VDC
Minimum pull-in voltage	85% of nominal at 207 bar	
Cavity	VC08-3 (See technical reference)	
Fluid	Mineral-based or synthetics with lubricating properties	
Viscosity range	7.4 to 420 mm ² /s	
Temperature range	-54 to 107 °C (Polyurethane seals)	
	-40 to 100 °C (Buna N seals)	
	-26 to 204 °C (Fluorocarbon seals)	
Degree of fluid contamination	The minimum pollution level is ISO4406 level 18/16/13, and level 15/13/11 is recommended to prolong the service life	

Performance (Cartridge Only)



Dimensions

