



2.39

30SD16-22 TYPE

Solenoid Directional Valve

Rated pressure (bar / psi) 207 / 3000
 Peak flow (L/min / gpm) 151.4/ 40 (See performance chart)

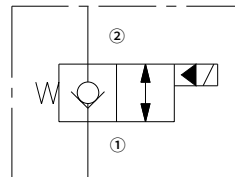
Features

- Continuous-duty rated coil
- Cartridges are voltage interchangeable
- Optional waterproof E-Coils rated up to IP69K
- Efficient wet-armature construction
- Industry common cavity
- Hardened parts for long life

Contents

Description	02
Operation	02
Ordering code	02
Materials	02
Technical data	03
Performance	03
Dimensions	04

Symbol



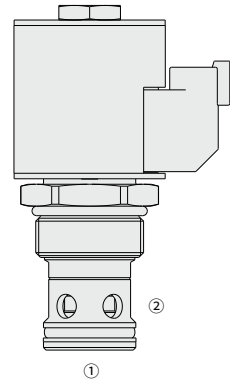
Description

A solenoid-operated, 2-way, normally closed, poppet-type, screw-in hydraulic cartridge valve, designed to function as a load-holding or blocking valve in applications requiring low internal leakage.

Operation

When de-energized, the 30SD16-22 acts as a check valve, allowing flow from ① to ②, while blocking flow from ② to ①.

When energized, the poppet lifts to open the ② to ① flow path. In this mode, flow is also allowed from ① to ②.



Ordering Code

	30SD16-22	-	-	-	-	-	-	-	-
Option:	Blank								
None									
Cartridge only	0								
Seals:									
Buna N (Std.)				N					
Polyurethane				P					
Fluorocarbon				V					
					Voltage Std. Coil:				
					Less Coil	00			
					10VDC	10			
					12VDC	12			
					20VDC	20			
					24VDC	24			
								Termination (VDC)	
								E-Coil:	
								Amp Junior Timer	EJ
								(IP67 Rated)	
								Deutsch DT04-2P	ER
								(IP69K Rated)	
								DIN 43650	EG
								(IP65 Rated)	
								Termination (VDC)	
								D-Coil:	
								Dual Spades	DS
								(SAE J858a, IP65K Rated)	

Materials

Cartridge:

Weight: 0.31 kg ; Steel with hardened work surfaces. Zinc-plated exposed surfaces; Buna N (Std.) seal.

Standard Ported Body:

Anodized high-strength aluminum alloy, rated to 240 bar; Ductile iron and steel bodies available; Dimensions may differ, consult factory.

Standard Coil: Consult factory.

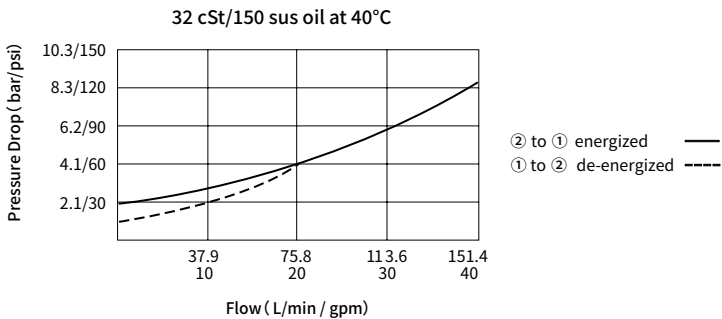
E-Coil:

Weight: 0.41 kg ; Perfect wound, fully encapsulated with rugged external metal shell; Rated up to IP69K with Deutsch sockets.

Technical Data

Rated pressure	207 bar (3000 psi)	
Peak flow	See performance chart	
Internal leakage	≤ 3 drops /min @207 bar	
Coil duty rating	Continuous from 85% to 115% of nominal voltage	
Initial coil current draw at 20°C	E-Coil	1.7 A at 12VDC; 0.85 A at 24VDC
	D-Coil	1.67 A at 12VDC; 0.83 A at 24VDC
Minimum pull-in voltage	85% of nominal at 207 bar	
Cavity	VC16-2 (See technical reference)	
Fluid	Mineral-based or synthetics with lubricating properties	
Viscosity range	7.4 to 420 mm ² /s	
Temperature range	-40 to 100 °C (Buna N seals)	
	-54 to 107 °C (Polyurethane seals)	
	-26 to 204 °C (Fluorocarbon seals)	
Degree of fluid contamination	The minimum pollution level is ISO4406 level 20/18/14, and level 17/15/13 is recommended to prolong the service life	

Performance (Cartridge Only)



Dimensions

01

