



2.2

30SD08-20J TYPE

Solenoid Directional Valve

Maximum pressure (bar / psi) 207 / 3000
 Peak flow (L/min / gpm) See performance chart

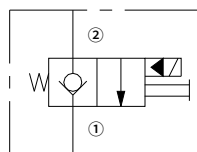
Features

- Continuous-duty rated coil
- Manual override standard
- Optional waterproof E-Coils rated up to IP69K
- Industry common cavity
- Hardened parts for long life

Contents

Description	02
Operation	02
Ordering code	02
Technical data	03
Performance	03
Materials	03
Dimensions	04

Symbol



Description

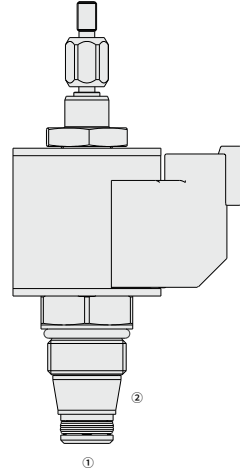
A solenoid-operated, 2-way, normally closed, poppet-type, screw-in hydraulic cartridge valve, with either "J" type manual override standard. This valve is intended as a blocking or load holding device for low flow circuits having pull-only manual override requirements for handles or cable linkage.

Operation

When de-energized, the valve acts as a check valve, allowing flow from ① to ②, while blocking flow from ② to ①.

When energized, the valve's poppet lifts to open the 2 to 1 flow path, while flow from ① to ② is severely restricted.

Operation of Manual Override Option: To manually override, pull and hold the cable. This override is not detented. The pull force required is approximately 24 lbs. The "J" option includes a male 10-32 thread for a cable attachment. If a cable is used, the internal valve spring may not provide enough force to overcome internal cable friction. An external means of returning the cable must be provided by the user.



Ordering Code

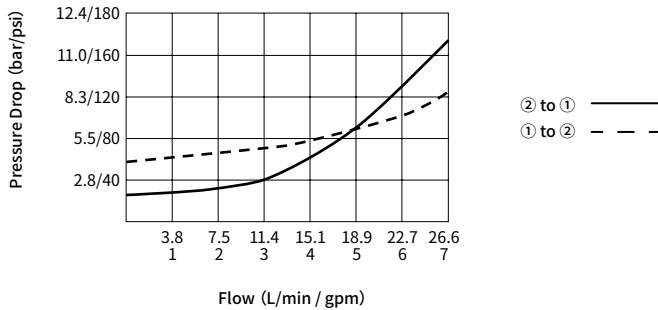
30SD08-20J		[]	-	[]	-	[]	-	[]	[]	[]	[]	[]
Cable Adapter	J											
Option:		Blank										
None		S										
150µ Screen												
Cartridge Only		0										
Seals:												
Buna N (Std.)								N				
Polyurethane								P				
Fluorocarbon								V				
Voltage Std. Coil:												
Less Coil								00				
10VDC								10				
12VDC								12				
20VDC								20				
24VDC								24				
Termination (VDC)												
E-Coil:												
Deutsch DT04-2P												ER
(IP69K Rated)												
Lead wires (2)												EL
(IP69K Rated)												
Termination (VDC)												
D-Coil:												
Dual Spades												DS
(SAE J858a, IP65K Rated)												
DIN 43650												DG
(IP65K Rated)												
Lead wires (2)												DL
(IP65K Rated)												

Technical Data

Maximum pressure	207 bar (3000 psi)	
Proof pressure:	255 bar (3700 psi)	
Peak flow	See performance chart	
Internal leakage	≤ 0.15 mL/min (3 drops/min) @207 bar	
Coil duty rating	Continuous from 85% to 115% of nominal voltage	
Initial coil current draw at 20°C	E-Coil	1.4 A at 12VDC; 0.7 A at 24VDC
	D-Coil	1.2 A at 12VDC; 0.6 A at 24VDC
Minimum pull-in voltage	85% of nominal at 207 bar	
Cavity	VC08-2 (See technical reference)	
Fluid	Mineral-based or synthetics with lubricating properties	
Viscosity range	7.4 to 420 mm ² /s	
Temperature range	-40 to 100 °C (Buna N seals)	
	-54 to 107 °C (Polyurethane seals)	
	-26 to 204 °C (Fluorocarbon seals)	
Degree of fluid contamination	The minimum pollution level is ISO4406 level 20/18/14, and level 17/15/13 is recommended to prolong the service life	

Performance (Cartridge Only)

32cSt/150 sus oil at 40°C



Materials

Cartridge:

Weight: 0.11 kg; Steel with hardened work surfaces. Zinc-plated exposed surfaces; Buna N (Std.) seal.

Standard Ported Body:

Anodized high-strength aluminum alloy, rated to 240 bar; Ductile iron and steel bodies available; Dimensions may differ, consult factory.

Standard Coil: Consult factory.

E-Coil:

Weight: 0.14 kg; Perfect wound, fully encapsulated with rugged external metal shell; Rated up to IP69K with Deutsch sockets.

Dimensions

(Dimensions in mm)

