



4.6

# 40R08-20 TYPE

## Relief, Direct-Acting Poppet

Maximum pressure (bar / psi)	276 / 4000
Peak flow (L/min / gpm)	22.7 / 6

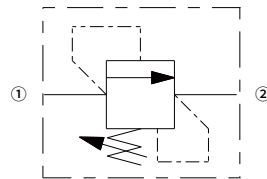
### Features

- Adjustments cannot be backed out of the valve
- Adjustment options A, B: positive stops prevent springs from going solid
- Rapid response to pressure changes
- Hardened parts for long life

### Contents

Description	02
Operation	02
Ordering code	02
Materials	02
Technical data	03
Performance	03
Dimensions	04

### Symbol

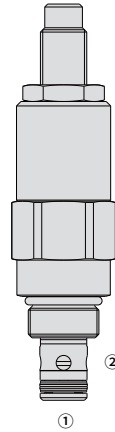


## Description

A screw-in, cartridge-style, direct-acting, poppet-type, hydraulic relief valve intended for lower flow circuits requiring low internal leakage.

## Operation

The 40R08-20 blocks flow from ① to ② until sufficient pressure is present at 1 to force the spring-opposed poppet from its seat.



## Ordering Code

	40R08-20	<input type="checkbox"/>	-	<input type="checkbox"/>	-	<input type="checkbox"/>	-	<input type="checkbox"/>	<input type="checkbox"/>	/	<input type="checkbox"/>	<input type="checkbox"/>	<input type="checkbox"/>
<b>Option:</b>	1/4 in. hex allen head	A											
	1-1/2 in. Dia. Alum. Knob	B											
	Factory preset non-adj	F											
	Factory preset hidden adj	H											
	<b>Cartridge Only</b>	0											
<b>Seals:</b>	Buna N (Std. )	N											
	Fluorocarbon	V											
	Polyurethane	P											
	Buna N (pressure on P only)	NC											
	Fluorocarbon (pressure on P only)	VC											
	Polyurethane (pressure on P only)	PC											
	<b>Spring Range:</b>												
	17.24-158.62 bar	18											
	17.24-248.28 bar	33											
	<b>Setting (bar):</b>												
	25 bar	M25											
	100 bar	M100											
	<b>Setting (psi):</b>												
	900psi	9.0											
	2350psi	23.5											
	2500psi	25											

## Materials

### Cartridge:

Weight: 0.24 kg; Steel with hardened work surfaces. Zinc-plated exposed surfaces; Buna N (Std. ) seal.

### Standard Ported Body:

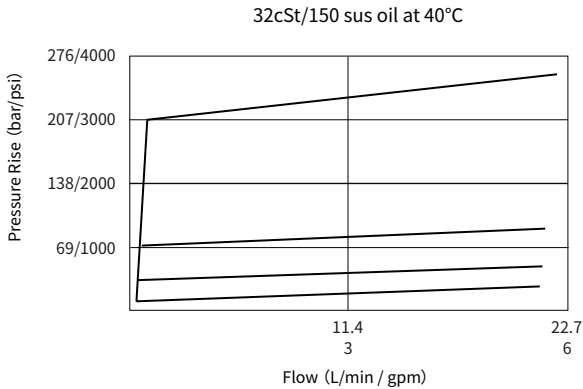
Anodized high-strength aluminum alloy, rated to 240 bar; Ductile iron and steel bodies available; Dimensions may differ, consult factory.

## Technical Data

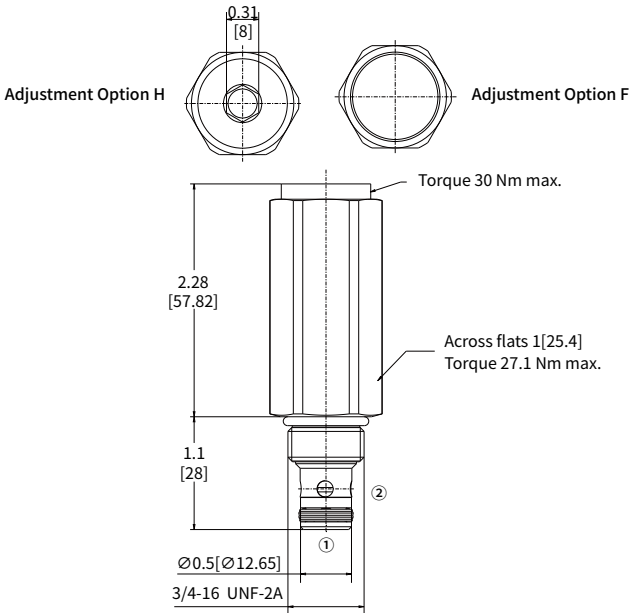
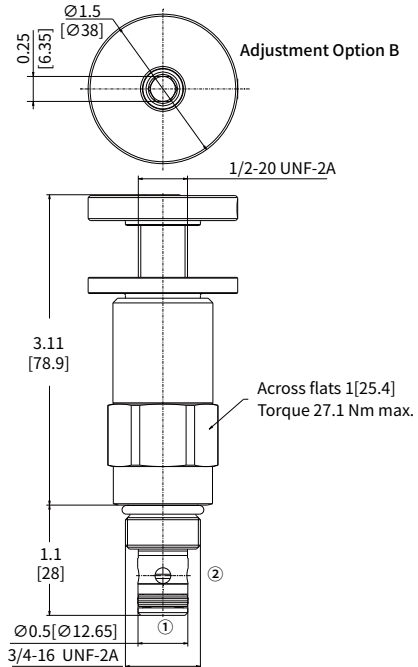
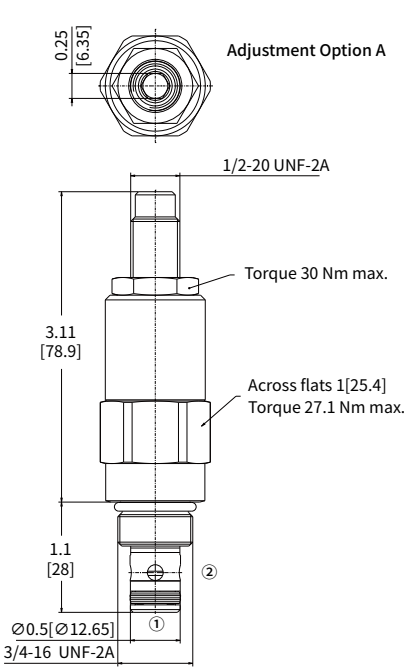
Maximum pressure	276 bar (4000 psi)
Peak flow	22.7 L/min (6 gpm)
Internal leakage	≤ 0.25 mL/min @ 75% of nominal setting
Crack pressure defined	bar (psi) evident at 0.95 L/min attained
Reseat pressure	Nominal 80% of crack pressure
Cavity	VC08-2 (See technical reference)
Fluid	Mineral-based or synthetics with lubricating properties
Viscosity range	7.4 to 420 mm <sup>2</sup> /s
Temperature range	-40 to 100 °C (Buna N seals)
	-54 to 107 °C (Polyurethane seals)
	-26 to 204 °C (Fluorocarbon seals)
Degree of fluid contamination	The minimum pollution level is ISO4406 level 20/18/14, and level 17/15/13 is recommended to prolong the service life

Spring Model Code	Nominal Factory Rating	Maximum Solid Adjustment
18	17.24-158.62 bar (250-2300psi)	200 bar (2900psi)
33	17.24-248.28 bar (250-3600psi)	303.45 bar (4400psi)

## Performance (Cartridge Only)



# Dimensions



INCH
MILLIMETER