



1.35

50SD58-30 TYPE

Solenoid Directional Valve

Rated pressure (bar / psi)	345 / 5000
Peak flow (L/min / gpm)	15.1 / 4 (See performance chart)

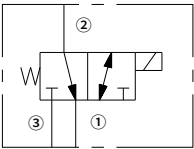
Features

- Continuous-duty rated coil
- Cartridges are voltage interchangeable
- Optional waterproof E-Coils rated up to IP69K
- Efficient wet-armature construction
- Hardened parts for long life

Contents

Description	02
Operation	02
Ordering code	02
Materials	02
Technical data	03
Performance	03
Dimensions	04

Symbol



Description

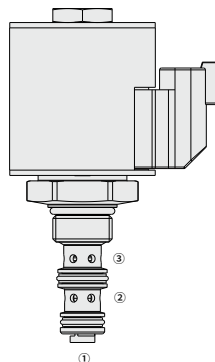
A solenoid-operated, 3-way, 2-position, direct-acting, spool-type, screw-in hydraulic directional valve designed for high pressure operation up to 345 bar (5000 psi).

Operation

When de-energized, the valve allows flow from ② to ① while blocking flow at ③ .

When energized, the cartridge's spool shifts to open from ③ to ②, while blocking flow out ①.

Note: Port ① must be connected to tank. Valve cannot withstand more than 276 bar (4000 psi) at the inlet of port ①.



Ordering Code

50SD58-30

Option:
None

Cartridge only
Blank

Seals:
Polyurethane (Std.)
Buna N
Fluorocarbon

E-Coil:
Less Coil 00
10VDC 10
12VDC 12
20VDC 20
24VDC 24

Termination (VDC)
E-Coil:
Amp Junior Timer
(IP67 Rated)
Deutsch DT04-2P
(IP69K Rated)
DIN 43650
(IP65 Rated)

Termination (VDC)
D-Coil:
Dual Spades
(SAE J858a)

Materials

Cartridge:

Weight: 0.2 kg; Steel with hardened work surfaces. Zinc-plated exposed surfaces; Polyurethane (Std.) seal.

Standard Ported Body:

Anodized high-strength aluminum alloy, rated to 240 bar; Ductile iron and steel bodies available;
Dimensions may differ, consult factory.

Standard Coil: Consult factory.

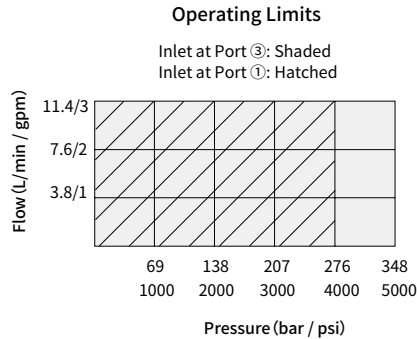
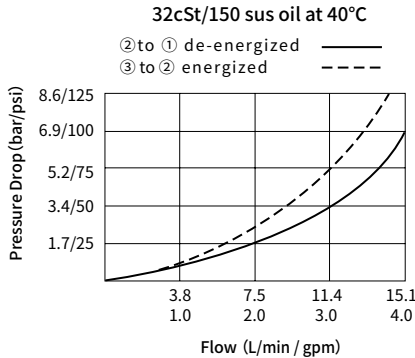
E-Coil:

Weight: 0.41 kg; Perfect wound, fully encapsulated with rugged external metal shell; Rated up to IP69K with Deutsch sockets.

Technical Data

Rated pressure		345 bar (5000 psi)
Peak flow		See performance chart
Internal leakage		Port ③ (De-energized): ≤ 131 mL/min@345 bar
		Port ① (Energized): ≤ 279 mL/min@345 bar
Coil duty rating		Continuous from 85% to 115% of nominal voltage
Initial coil current draw at 20°C	E-Coil	1.7 A at 12VDC; 0.85 A at 24VDC
	D-Coil	1.67 A at 12VDC; 0.83 A at 24VDC
Minimum pull-in voltage		85% of nominal at 207 bar
Cavity		VC08-3
Fluid		Mineral-based or synthetics with lubricating properties
Viscosity range		7.4 to 420 mm²/s
Temperature range		-54 to 107 °C (Polyurethane seals)
		-40 to 100 °C (Buna N seals)
		-26 to 204 °C (Fluorocarbon seals)
Degree of fluid contamination		The minimum pollution level is ISO4406 level 18/16/13, and level 15/13/11 is recommended to prolong the service life

Performance (Cartridge Only)



Dimensions

