



1.31

35SD10-58C TYPE

Solenoid Directional Valve

Rated pressure (bar / psi)	250 / 3625
Peak flow (L/min / gpm)	30.3 / 8 (See performance chart)

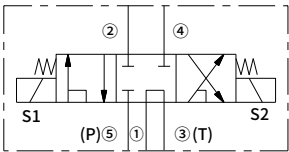
Features

- Continuous-duty rated coil
- Efficient wet-armature construction
- Cartridges are voltage interchangeable
- Optional waterproof E-Coils rated up to IP69K
- Industry common cavity
- Hardened parts for long life and low leakage

Contents

Description	02
Operation	02
Ordering code	02
Materials	02
Technical data	03
Performance	03
Dimensions	04

Symbol



Description

A solenoid-operated, 5-way, 3-position, direct acting, screw-in hydraulic cartridge valve with integral load-sense port.

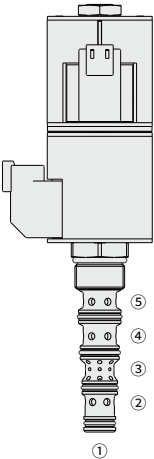
Operation

When de-energized, the valve blocks flow between all work ports and load sense at port ① is vented to ③ .

When coil 1(S1) is energized, flow is allowed from ⑤ to ② and from ④ to ③ .

When coil 2(S2) is energized, flow is allowed from ⑤ to ④ and from ② to ③ .

Load sense at port ① is connected to port ⑤ when spool is in the shifted positions.



Ordering Code

35SD10-58C					
Option:					
None					
Blank					
Cartridge only					
0					
Seals:					
Polyurethane (Std.)					
Buna N					
Fluorocarbon					
P					
N					
V					
E-Coil:					
Less Coil					
10VDC					
12VDC					
20VDC					
24VDC					
00					
10					
12					
20					
24					
Termination (VDC)					
E-Coil:					
Amp Junior Timer					
(IP67 Rated)					
Deutsch DT04-2P					
(IP69K Rated)					
DIN 43650					
(IP65 Rated)					
EJ					
ER					
EG					
Termination (VDC)					
D-Coil:					
Dual Spades					
(SAE J858a)					
DS					

Materials

Cartridge:

Weight: 0.3 kg ; Steel with hardened work surfaces. Zinc-plated exposed surfaces; Polyurethane (Std.) seal.

Standard Ported Body:

Anodized high-strength aluminum alloy, rated to 240 bar; Ductile iron and steel bodies available; Dimensions may differ, consult factory.

Standard Coil: Consult factory.

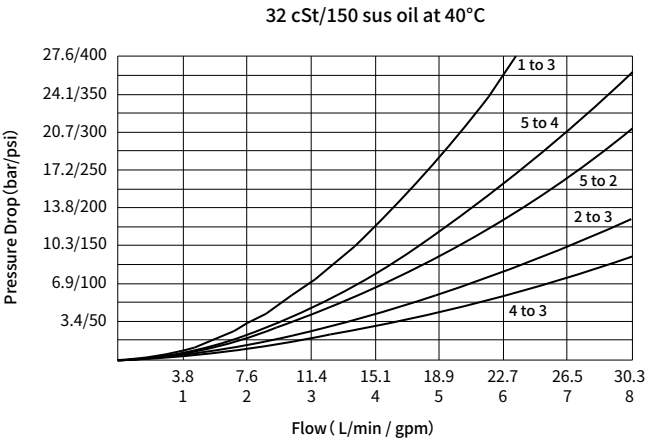
E-Coil:

Weight: 0.41 kg ; Perfect wound, fully encapsulated with rugged external metal shell; Rated up to IP69K with Deutsch sockets.

Technical Data

Rated pressure		250 bar (3625 psi)
Peak flow		30.3 L/min (8 gpm)
Internal leakage		≤ 164 mL/min (10 cu. in./min) @207 bar
Coil duty rating		Continuous from 85% to 115% of nominal voltage
Initial coil current draw at 20°C	E-Coil	1.7 A at 12VDC; 0.85 A at 24VDC
	D-Coil	1.67 A at 12VDC; 0.83 A at 24VDC
Minimum pull-in voltage		85% of nominal at 207 bar
Cavity		VC10-5
Fluid		Mineral-based or synthetics with lubricating properties
Viscosity range		7.4 to 420 mm ² /s
Temperature range	-54 to 107 °C (Polyurethane seals)	
	-40 to 100 °C (Buna N seals)	
	-26 to 204 °C (Fluorocarbon seals)	
Degree of fluid contamination		The minimum pollution level is ISO4406 level 18/16/13, and level 15/13/11 is recommended to prolong the service life

Performance (Cartridge Only)



Dimensions

