



1.17

30SD10-21 TYPE

Solenoid Directional Valve

Rated pressure (bar / psi)	207 / 3000
Peak flow (L/min / gpm)	68.1 / 18 (See performance chart)

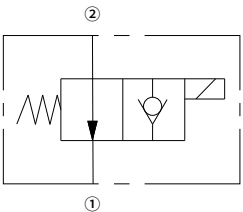
Features

- Continuous-duty rated coil
- Efficient wet-armature construction
- Cartridges are voltage interchangeable
- Optional waterproof E-Coils rated up to IP69K
- Industry common cavity
- Hardened parts for long life and low leakage

Contents

Description	02
Operation	02
Ordering code	02
Materials	02
Technical data	03
Performance	03
Dimensions	04

Symbol

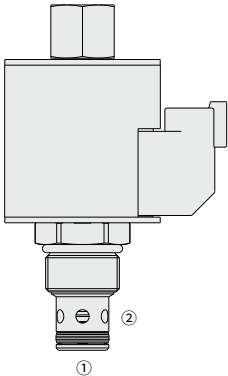


Description

A solenoid-operated, 2-way, piloted, poppet-type, normally open, screw-in, hydraulic cartridge valve designed for low leakage in load-holding applications.

Operation

When de-energized, the 30SD10-21 allows flow from ② to ① . Flow from ① to ② is severely restricted in this mode. When energized, the valve's poppet closes on its seat, blocking flow in the ② to ① direction. In this mode the cartridge will allow ① to ② flow after overcoming the solenoid force (requires 3.4 to 10.3 bar / 50 to 150 psi).



Ordering Code

30SD10-21			-		-		-						
Option:													
None													
		Blank											
Cartridge only		0											
Seals:													
Buna N (Std.)		N											
Polyurethane		P											
Fluorocarbon		V											
E-Coil:													
Less Coil		00											
10VDC		10											
12VDC		12											
20VDC		20											
24VDC		24											
Termination (VDC)													
E-Coil:													
Amp Junior Timer (IP67 Rated)		EJ											
Deutsch DT04-2P (IP69K Rated)		ER											
DIN 43650 (IP65 Rated)		EG											
Termination (VDC)													
D-Coil:													
Dual Spades (SAE J858a)		DS											

Materials

Cartridge:

Weight: 0.2 kg ; Steel with hardened work surfaces. Zinc-plated exposed surfaces; Buna N (Std.) seal.

Standard Ported Body:

Anodized high-strength aluminum alloy, rated to 240 bar; Ductile iron and steel bodies available; Dimensions may differ, consult factory.

Standard Coil: Consult factory.

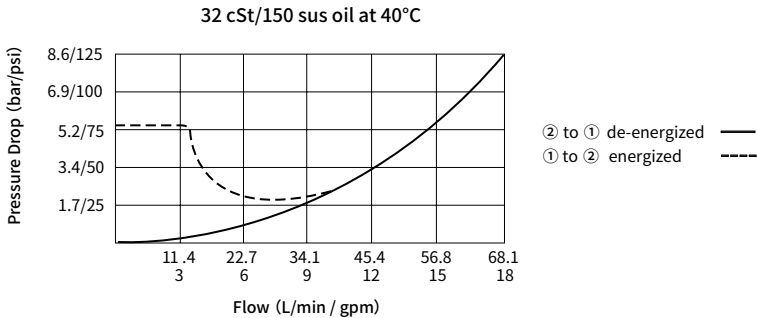
E-Coil:

Weight: 0.41 kg ; Perfect wound, fully encapsulated with rugged external metal shell; Rated up to IP69K with Deutsch sockets.

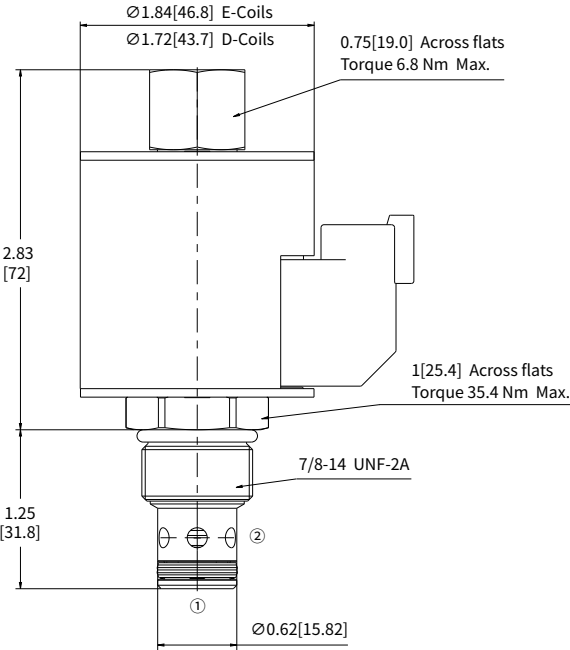
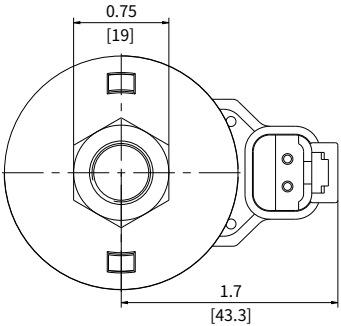
Technical Data

Rated pressure		207 bar (3000 psi)
Peak flow		68.1 L/min (18 gpm) ; See performance chart
Internal leakage		≤ 0.15 mL/min (3 drops /min) @207 bar
Coil duty rating		Continuous from 85% to 115% of nominal voltage
Initial coil current draw at 20°C	E-Coil	1.7 A at 12VDC; 0.85 A at 24VDC
	D-Coil	1.67 A at 12VDC; 0.83 A at 24VDC
Minimum pull-in voltage		85% of nominal at 207 bar
Cavity		VC10-2 (See technical reference)
Fluid		Mineral-based or synthetics with lubricating properties
Viscosity range		7.4 to 420 mm ² /s
Temperature range	-40 to 100 °C (Buna N seals)	
	-54 to 107 °C (Polyurethane seals)	
	-26 to 204 °C (Fluorocarbon seals)	
Degree of fluid contamination		The minimum pollution level is ISO4406 level 20/18/14, and level 17/15/13 is recommended to prolong the service life

Performance (Cartridge Only)



Dimensions



INCH
MILLIMETER