



3.9

# 30J10-36A TYPE

## Pressure Reducing / Relieving Valve

Rated pressure (bar / psi)	210 / 3000
Peak flow (L/min / gpm)	56/ 15 (See performance chart)

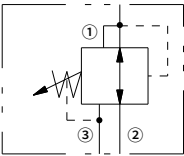
### Features

- Adjustments cannot be backed out of the valve
- Adjustments prohibit springs from going solid
- Industry common cavity
- Optional spring ranges to 207 bar (3000 psi)
- Hardened parts for long life

### Contents

Description	02
Operation	02
Ordering code	02
Materials	02
Technical data	03
Performance	03
Dimensions	04

### Symbol



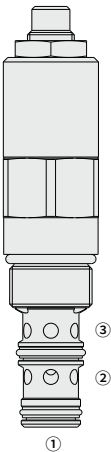
## Description

A screw-in, cartridge-style, pilot-operated, spool-type, hydraulic pressure reducing/relieving valve with internal pilot and internal spring chamber drain, designed to act as a pressure-regulating device for secondary circuits.

## Operation

In its steady state, the 30J10-36A allows flow to pass bidirectionally from ② to ①, with the spring chamber constantly drained at ③. On attainment of a pre-determined pressure at ①, the cartridge shifts to restrict input flow at ②, thereby regulating pressure at ①. In this mode, the valve will also relieve ① to ③.

Deadband (from reducing to relieving) pressure rise over reduced pressure setting: Non-flow condition: approximately 0.55 bar (8 psi); with flow: approximately 2.1 bar (30 psi).



## Ordering Code

30J10-36		A	-		-		-			/				
Option:		A	-		-		-			/				
1/4 in. Hex Allen Head														
Cartridge Only		0					Adjustment Range:		4	Setting :		for Adjustable or		Blank
							6.9 ~ 27.6bar			Specify,				
							(100 ~ 400psi)							
							10.3 ~ 103bar		15					
							(150 ~ 1500psi)							
Seals:							27.6 ~ 207bar		30	Setting in bar,				
Polyurethane (Std.)		P					(400 ~ 3000psi)			for example:				
Buna N		N								25 bar		M25		
Fluorocarbon		V								100 bar		M100		
										Setting in psi,				
										for example:				
										900 psi		9		
										2350 psi		23.5		

## Materials

### Cartridge:

Weight: 0.27 kg; Steel with hardened work surfaces. Zinc-plated exposed surfaces; Polyurethane (Std. ) seal.

### Standard Ported Body:

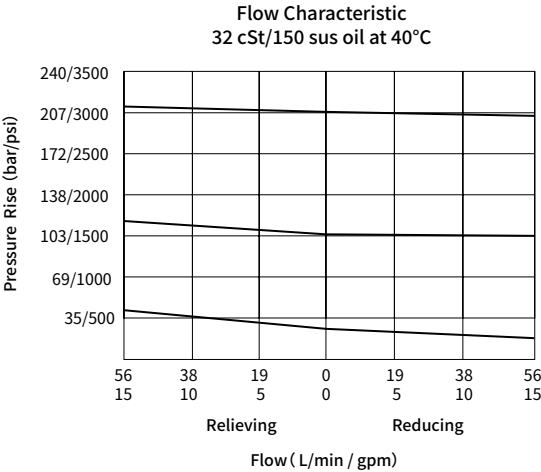
Anodized high-strength aluminum alloy, rated to 240 bar; Ductile iron and steel bodies available; Dimensions may differ, consult factory.

Technical Data

Rated pressure	210 bar (3000 psi)
Peak flow	See performance chart
Pilot orifice	Pilot-operated through 0.51 mm (0.020 inch) hole
Valve torque	32.6~35.4 Nm
Lock nut torque	25~30 Nm
Cavity	VC10-3
Fluid	Mineral-based or synthetics with lubricating properties
Viscosity range	7.4 to 420 mm <sup>2</sup> /s
Temperature range	-54 to 107 °C (Polyurethane seals)
	-40 to 100 °C (Buna N seals)
	-26 to 204 °C (Fluorocarbon seals)
Degree of fluid contamination	The minimum pollution level is ISO4406 level 20/18/14, and level 17/15/13 is recommended to prolong the service life

03

Performance (Cartridge Only)



## Dimensions

